

Royal Freshwater Bay Yacht Club



Windward/Leeward Racing Supplementary Sailing Instructions

BW8 AND ETCHELLS

Saturday, 18 November, 2023

0900 – Etchells WL Races - Syd Corser Series

1435 – BW8 WL Races – State Championship Heats 3 & 4

1435 – Etchells WL Races – Syd Corser Series

Sunday, 19 November, 2023

0900 – Etchells WL Races - Rob Bird Series

Race Control: VHF 77 or 0422 654 833

Royal Freshwater Bay Yacht Club
Windward/Leeward Racing –
BW8 AND ETHELLES
Saturday 18 and Sunday 19 November 2023

Supplementary Sailing Instructions

The Organising Authority is the Royal Freshwater Bay Yacht Club (Inc)

1 RULES

- 1.1 The Racing Rules of Sailing (RRS) 2021-2024.
- 1.2 The RFBYC Standard Sailing Instructions will apply.
- 1.3 In the event of conflict between the Standard Sailing Instructions and the Supplementary Sailing Instructions, the Supplementary Sailing Instructions shall prevail.

2 CHANGES TO SAILING INSTRUCTIONS

- 2.1 Any change to the Sailing Instructions made on the water will be delivered by a Race Committee Signal Boat. Flag L will be displayed while the changes are being given. It is the responsibility of each boat to obtain the written or oral instructions.

3 SIGNALS MADE ASHORE

- 3.1 Signals made ashore will be displayed on the flag mast on the upper lawn area of RFBYC Main club house.

4 SCHEDULE OF RACES

Date/Day	Fleet	Time	Event
Sat 18 November (Session 1)	Etchells	0900	Syd Corser Series, Subsequent races to follow
Sat 18 November (Session 2)	Etchells	From 1435	Syd Corser Series, Subsequent races to follow
Sat 18 November (Session 2)	BW8	From 1435	Windward Leeward Racing, Subsequent races to follow
Sun 19 November (Session 3)	Etchells	0900	Rob Bird Series Subsequent races to follow.

- 4.1 For Sessions 1 on Saturday 18 November and Session 3 on Sunday 19 November, no warning signal will be made after 1130. For Session 2 on Saturday 18 November, no warning signal will be made after 1630.
- 4.2 Subsequent races for each fleet will occur as soon as practical following the previous race.
- 4.3 For Session 2 on Saturday 18 November, fleets may be started in any order. This will be signalled by the display of class flags at the Warning Signal.

5 RACE AREA AND COURSE

- 5.1 For sessions 1 and 2, racing will be conducted in the area known as Melville Water West. For session 3, racing will be conducted in Freshwater Bay.
- 5.2 Courses will be Windward /Leeward see Appendix A.
- 5.3 For sessions 1 on 18 November and Session 3 on 19 November, except when

starting or finishing, boats shall not pass through the Start/Finish line in either direction when the Orange Flag is being displayed. For session 2 on 18 November, other fleets sailing Saturday pm races will be allowed to sail through the start/finish line in any direction.

- 5.4 For sessions 1 on 18 November and Session 3 on 19 November boats observed breaking this rule will be penalised, without a hearing in accordance with SI 17.2. This changes Rule 63.1 and A5. (NP)

6 COMMITTEE VESSELS

- 6.1 For sessions 1 on 18 November and Session 3 on 19 November, the Start / Finish vessel will be the RFBYC "Tam Thompson".
For session 2 on 18 November, the Start / Finish vessel will be the RFBYC "Merv Finn".

7 MARKS

7.1 Sessions 1 and 3

- 7.1.1 Marks 1, 2, 3S and 3P will be yellow cylindrical buoys.
7.1.2 The start and finish marks will be black and white chequered buoys.
7.1.3 Marks 1, 2, and 3P will be left to port.

7.2 Session 2

- 7.2.1 Mark 1, will be a red pimple buoy.
7.2.2 Mark 2s will be the start/finish mark and be a black and white chequered buoy.
7.2.4 Mark 2p will be the start/finish vessel.

8 LATE STARTER

A boat starting later than 5 minutes after her starting signal will be scored 'DNS' without a hearing. This changes RRS A4.

9 THE START AND FINISH

- 9.1 Races will be started using RRS26 modified such that the warning signal will be displayed 3 minutes prior to the start and the preparatory signal 2 minutes prior to the start.
9.2 The starting line is between the staff displaying an orange flag on the Committee vessel at the starboard end and a black and white chequered buoy at the port end.
9.3 For Session 2 on Saturday 18 November, the orange on station flag will be raised with the warning signal and lowered again on the starting signal.
9.4 The finishing line is between the staff displaying a blue flag on the Committee vessel at the port end and a black and white chequered buoy at the starboard end.
9.5 To alert competitors that another race will follow in that session, code flag Q will be displayed as boats are finishing.
9.6 The 'Q' Flag will be lowered with 4 sound signals 1 minute before the first warning signal for the following race.

10 TIME LIMIT

- 10.1 Boats failing to finish within 5 minutes of the first boat of its fleet which sails the course and finishes, will be scored 'Did Not Finish'. This changes RRS 35 and A4 and A5.

11 CHANGE OF COURSE

In the event of a minor change in the wind direction, (less than 15 degrees), the Race Committee may relocate the existing marks without signalling a Change of Course. This changes RRS33.

12 SCORING

12.1 Etchells Syd Corser and Rob Bird Series

12.1.1 Two races are required to be completed to constitute a series.

12.1.2 When fewer than four races have been completed, a boat's series score will be the total of her race scores.

12.1.3 When five to six races have been completed, a boats regatta score will be the total of her scores excluding her worst score.

12.2 BW8 State Heats

A boat's series score will be in accordance with the BW8 2023 State Championship Supplementary Sailing Instructions..

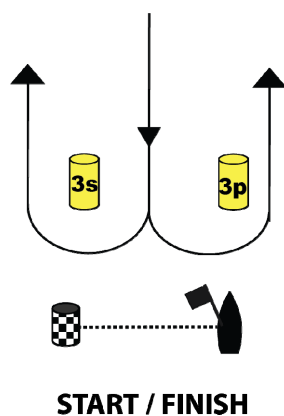
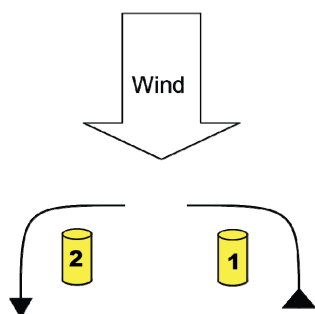
13 RESULTS

Results for the BW8 Fleet will be presented on Saturday 18 November from 1730pm along with all other fleets sailing that day. Results for the Etchells Fleet will be presented on Sunday 19 November as soon as practicable on completion of racing.

Windward/Leeward Racing Saturday 18 and Sunday 19 November

Appendix A - Courses

All Fleets Session 1 and 3



Course 1 (Numeral Pennant 1)

Start – 1 – 2 – Finish

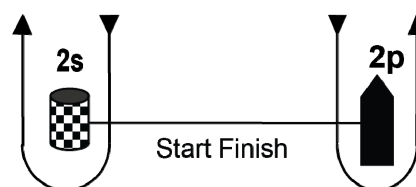
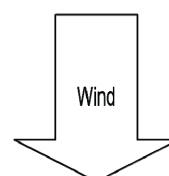
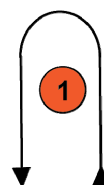
Course 2: (Numeral Pennant 2)

Start – 1 – 2 – 3s/3p – 1 – 2 – Finish

Course 3: (Numeral Pennant 3)

Start – 1 – 2 – 3s/3p – 1 – 2 – 3s/3p – 1 – 2 - Finish

All Fleets Session 2



Course 1 (Numeral Pennant 1)

Start – 1 – Finish

Course 2: (Numeral Pennant 2)

Start – 1 – 2s/2p – 1 – Finish

Course 3: (Numeral Pennant 3)

Start – 1 – 2s/2p – 1 – 2s/2p – 1 - Finish