



Royal Freshwater Bay Yacht Club SUPPLEMENTARY SAILING INSTRUCTIONS

26 & 27 November 2022

Rockingham Race Regatta

Including the Dolphin Race and Gordon Craig Ocean Race



RFBYC Flag Officers:

Commodore Peter Chalmer

Vice Commodore Tim Cummins

Rear Commodore Sail Marty Jurat

Rear Commodore Power Geoff Wells

Rear Commodore Dinghy James Kornweibel

Honorary Treasurer Andrew McMillan

Yachting Operations Manager:

Debbie Blaauw

RFBYC Offshore Administrator:

Susan Ghent (offshore@rfbyc.asn.au or 9286 8200)

Race Committee:

Geoff Brown

Vice Commodore Peter Chalmer

Rear Commodore Sail Marty Jurat

David Riddle

Race Officer:

Geoff Brown



rfbyc.asn.au



SUPPLEMENTARY SAILING INSTRUCTIONS

These Supplementary Sailing Instructions shall govern this event together with the Notice of Race and Sailing Instructions contained in the Ocean Racing Western Australia Handbook 2022-2023. In the event of conflict these SSI's shall prevail.

1. Schedule of Racing

Date	Race details	Start area / First Warning Signal
Saturday 26 November 2022	One windward leeward race Category 4	Start area, off Cottesloe Beach 0940 Division Two <ul style="list-style-type: none">Followed by Division One
	Dolphin Race Category 4	Start area, off Cottesloe Beach As soon as practicable after the windward / leeward race Division Two <ul style="list-style-type: none">Followed by Division One
Sunday 27 November 2022	One windward leeward race Category 4	Start area, in Cockburn Sound 1025 Division Two <ul style="list-style-type: none">Followed by Division One
	Gordon Craig Ocean Race Category 4	Start area, in Cockburn Sound As soon as practicable after the windward / leeward race, Division Two <ul style="list-style-type: none">Followed by Division One

This changes the individual race notice page for the Dolphin Race and Gordon Craig Ocean Race in the 2022-2023 ORWA Season Handbook.

2. ELIGIBILITY AND ENTRY

- 2.1 Prior to midday on Thursday 24 November, a boat must provide the following:
- A valid Australian Sailing Equipment Audit Form Category 4 or above.
 - ORWA Radio Declaration form for the current season (after 30 June 2022).
 - At least one Team Shore Contact.
- by attaching the information to their race entry.
- 2.2 Boats are required to sign on each person in their crew using the TopYacht system by adding their crew to their boat's entry for the event. Teams may access and update their crew list in the TopYacht system up to one hour prior to the warning signal for their first race of the day.

Attention is drawn to item 5.2 in these SSI's which requires a boat to confirm the number of POB with Offshore Race Control by radio prior to the warning signal of their first race of the day.

3. NOTICES TO COMPETITORS

- 3.1 If any notices or changes are required, they shall be posted on the event webpage and may be distributed to each boat by email except that for any change made after 0800 on the day of a race will be announced using Code Flag "L" on the Start Boat and the notice or change broadcast on VHF CH 72 prior to the first warning signal.
This changes Sailing Instruction 4.

4. COMMITTEE BOAT

- 4.1 The RFBYC Committee Boat *Tam Thompson* flying the Royal Freshwater Bay Yacht Club Burgee.

5. RADIO COMMUNICATIONS

- 5.1 "Offshore Race Control" will be open for communications on VHF Channel 72 from 0830 hours on Saturday 26 November and from 0930 on Sunday 27 November.
- 5.2 On each race day (Saturday 26 November and Sunday 27 November) a boat shall contact Offshore Race Control on VHF CH 72 prior to the warning signal of their first race for the day to check its radio and confirm the number of POB (Persons On Board). Failure to demonstrate satisfactory communication shall result in the boat being scored DNS. Offshore Race Control will give each boat a reference number after its satisfactory check-in.
This changes Sailing Instruction 19.1.

6. ROCKINGHAM BOATING PROHIBITED AREAS

- 6.1 Your attention is drawn to the separately attached Department of Transport "Rockingham Boating Guide" showing in red the prohibited area which is used for diving training. The area is described in detail and its outer boundaries are marked with yellow buoys. Note the close proximity of the NW corner of this area to TCYC Mark 'Q' and also the prohibited area within 50m of the Palm Beach Jetty.

For the purpose of the RRS these areas are **obstructions**.

7. THE START

- 7.1 The starting line is between the staff displaying an orange flag on the Committee Boat at the starboard end and a black and white chequered buoy at the Port end.

A clearance buoy may be tethered to the stern of the Committee Boat. This buoy and its line are deemed to be part of the Committee Boat for the purpose of RRS 31 and shall be passed on the same side as the Committee Boat when starting.

- 7.2 There will be no Double Handed start. Teams who are racing in the Double Handed division will start in Division One or Division Two. Divisions may be combined for overall results if fleet numbers are less than four.

This changes the individual race notice.

8. COURSE TO BE SAILED

- 8.1 The courses to be sailed are detailed in Annex 1.
Mark locations for the Dolphin Race and Gordon Craig Ocean Race are listed in the ORWA Handbook, however TCYC marks are defined more accurately in Annex 2 to these SSIs.

9. SHORTENED COURSE

9.1 For the Dolphin Race:

When Code Flag 'S' is displayed with the warning signal of the relevant class, omit James Point Buoy (yellow).

When Code Flag 'S' is displayed over Code Flag 'F' flown from The Tam Thompson or RFBYC Big RIB at any mark, omit James Point Buoy (yellow).

10. MANDATORY POSITION REPORTS BY RADIO

10.1 Dolphin Race:

- boats shall report at James Point Buoy (Yellow).
- When Code Flag 'S' has been displayed to indicate a shortened course, boats shall report at TCYC Mark "Y".

10.2 Gordon Craig Ocean Race:

- boats shall report at No. 10 Channel Marker.

11. ROCKINGHAM RACE REGATTA SCORING

11.1 The Rockingham Race Regatta shall consist of a maximum of four races and each boats score shall be the sum of her race scores.

12 PRIZES AND TROPHIES

12.1 Pennants and prizes will be awarded using IRC and PHS at the discretion of the OA.

12.1.1 Pennants for Saturday 26 November will be presented at the presentation of the day's racing at The Cruising Yacht Club. Scheduled for 1800 at the Clubhouse.

12.1.2 Pennants for Sunday 27 November will be presented at the 46th Farrawa Cup Series presentation evening.

12.1.3 Prizes for the Rockingham Race Regatta will be presented at the 46th Farrawa Cup Series presentation evening.

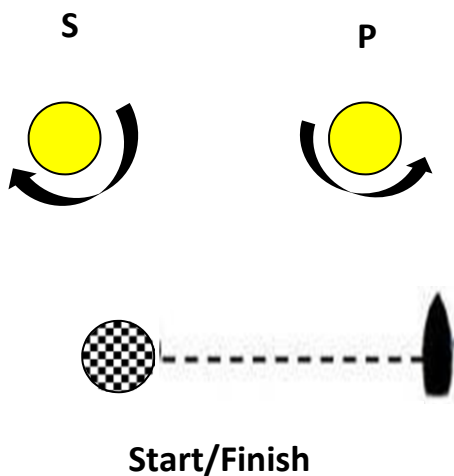
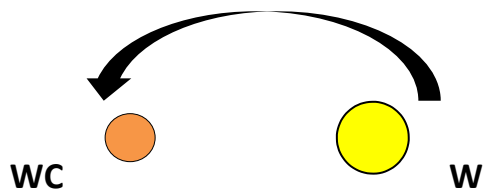
12.2 46th Farrawa Cup Series:

12.2.1 The Dolphin Race and Gordon Craig Ocean Race results count towards the overall Farrawa Cup Series. Results will be calculated using IRC and PHS for Division 1 and 2 (at the discretion of the Organising Authority).

12.2.2 The 46th Farrawa Cup Series presentation evening is scheduled to be held on Friday 28 April 2023 at RFBYC.

Annex 1

Windward – Leeward Course



COURSE TO BE SAILED

Marks 'W' and 'WC' are to be left to port.

Division 1

Start – W – WC - Gate P or S – W - WC – Gate P or S – W - WC - Finish

Division 2, Double Handed

Start – W - WC – Gate P or S – W - WC – Finish

MARKS

Marks W, P and S will be yellow conical buoys.

Mark WC will be an orange pimple buoy.

FINISH LINE

Windward/Leeward Race – Finishing between the Committee Boat at the Port end and a black and white chequered buoy at the Starboard end.

DOLPHIN RACE

Approximately 27 nautical miles

COURSE		
START		
DAY BUOY		
(COCKBURN SOUND CHANNEL) RED "B" CHANNEL MARKER	PORT	
GATE: (COCKBURN SOUND CHANNEL) RED "J" CHANNEL MARKER	PORT	
GATE: (COCKBURN SOUND CHANNEL) GREEN No. 10 CHANNEL MARKER	STARBOARD	
GREEN No. 11 CHANNEL MARKER	STARBOARD	
EASTERN CHALLENGER PASSAGE LEAD BEACON	PORT	
JERVOISE BAY NORTH CARDINAL MARK	STARBOARD	
TCYC CLUB BUOY "Y" (PVC PIPE)	PORT	
*JAMES POINT BUOY (YELLOW)	PORT	*OMIT FOR SHORT COURSE
PASS: SOUTHERN FLATS EAST CARDINAL MARK	STARBOARD	
TCYC CLUB BUOY "E" (PVC PIPE)	STARBOARD	
TCYC CLUB BUOY "Q" (PVC PIPE)	STARBOARD	
TCYC FINISH LINE		SEE NOTE

Attention to SSI 9:

- When Code Flag 'S' is displayed with the warning signal of the relevant class, omit the mark of the course omit James Point Buoy (yellow).
- When Code Flag 'S' is displayed over Code Flag 'F' flown from The Tam Thompson or RFBYC Big RIB at any mark, omit James Point Buoy (yellow).

DOLPHIN RACE FINISH LINE

The TCYC Finish Line is between the staff at the finishing box above the TCYC Clubhouse and the white PVC spar buoy approximately 60 meters N.W. of the TCYC jetty.

GORDON CRAIG OCEAN RACE

Approximately 22 nautical miles

COURSE		
START		
DAY BUOY		
TCYC CLUB BUOY "E" (PVC PIPE)	STARBOARD	
TCYC CLUB BUOY "Q" (PVC PIPE)	STARBOARD	
TCYC CLUB BUOY "I" (PVC PIPE)	STARBOARD	
JERVOISE BAY NORTH CARDNIAL MARK	PORT	
(COCKBURN SOUND CHANNEL) SOUTH TRANSIT BEACON (REAR)	STARBOARD	
GATE: (COCKBURN SOUND CHANNEL) GREEN No. 10 CHANNEL MARKER	PORT	
GATE: (COCKBURN SOUND CHANNEL) RED "J" CHANNEL MARKER	STARBOARD	
(COCKBURN SOUND CHANNEL) RED "B" CHANNEL MARKER	STARBOARD	
SOUTH MOLE FINISH		

The finish is listed in item 15 of the ORWA Notice of Race.

Annex 2

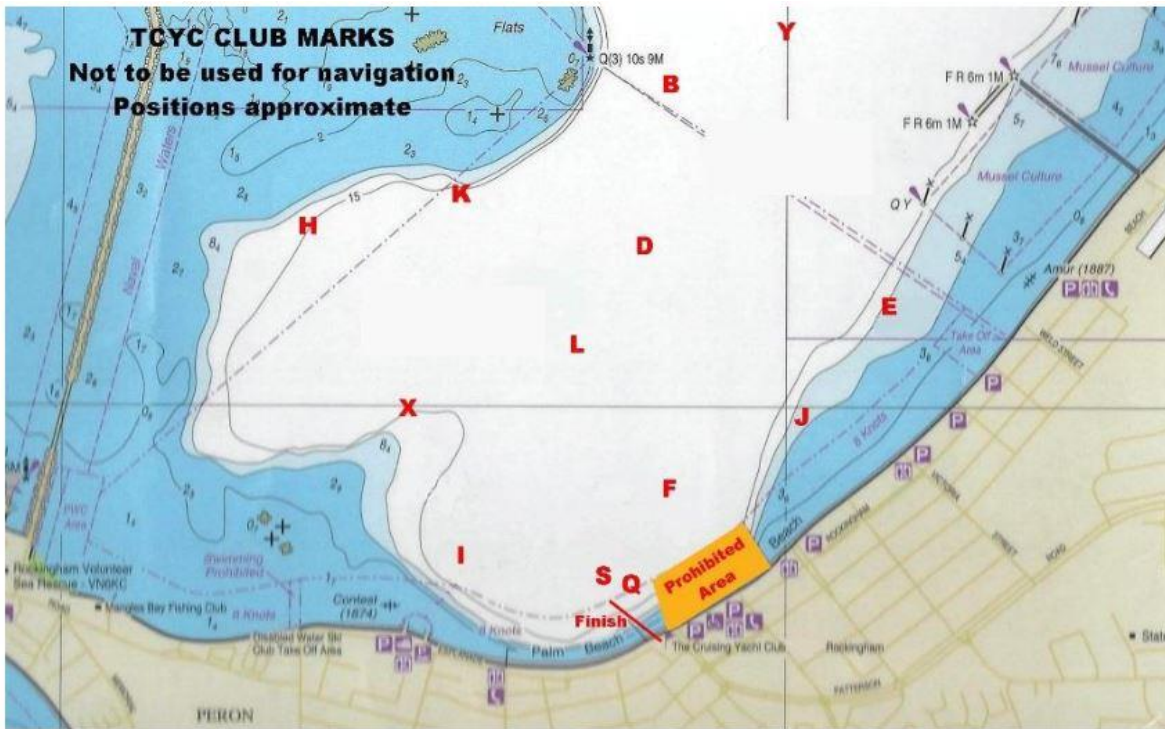
TCYC Mark Coordinates

B	32° 15.247S	115° 43.742E
D	32° 15.587S	115° 43.629E
E	32° 15.838S	115° 44.261E
F	32° 16.211S	115° 43.757E
H	32° 15.676S	115° 42.660E
I	32° 16.357S	115° 43.076E
J	32° 16.067S	115° 44.045E
K	32° 15.536S	115° 43.096E
L	32° 15.828S	115° 43.448E
Q	32° 16.410S	115° 43.597E
S	32° 16.380S	115° 43.550E
X	32° 15.818S	115° 43.160E
Y	32° 15.125S	115° 43.955E

TCYC marks are white PVC poles and are located in the positions listed above.

Please note that a mark 'S' is close to the TCYC start/finish line and should not be confused with this. See diagram below:





	Start	B	D	E	F	H	I	J	K	L	Q	S	Y	X
Start		0.74 25°	0.40 34°	0.77 84°	0.44 131°	0.64 292°	0.50 209°	0.60 104°	0.44 330°	0.12 39°	0.53 158°	0.47 166°	0.94 32°	0.24 258°
B	0.74 205°		0.35 195°	0.73 143°	0.96 179°	1.01 245°	1.24 206°	0.85 162°	0.62 242°	0.63 203°	1.17 186°	1.15 190°	0.22 55°	0.91 217°
D	0.40 214°	0.35 15°		0.59 115°	0.63 170°	0.83 263°	0.90 211°	0.59 144°	0.46 277°	0.28 212°	0.82 182°	0.80 188°	0.54 31°	0.60 230°
E	0.77 264°	0.73 323°	0.59 295°		0.57 229°	1.37 277°	1.13 243°	0.29 219°	1.03 287°	0.69 271°	0.80 224°	0.84 230°	0.76 340°	1.01 262°
F	0.44 311°	0.96 359°	0.63 350°	0.57 49°		1.07 300°	0.59 256°	0.28 60°	0.88 320°	0.46 326°	0.24 214°	0.27 232°	1.10 9°	0.62 293°
H	0.64 112°	1.01 65°	0.83 83°	1.37 97°	1.07 120°		0.77 153°	1.24 109°	0.39 69°	0.68 103°	1.08 133°	1.00 135°	1.23 63°	0.46 130°
I	0.50 29°	1.24 26°	0.90 31°	1.13 243°	0.59 76°	0.77 333°		0.87 70°	0.82 1°	0.61 31°	0.44 97°	0.36 94°	1.44 31°	0.38 1°
J	0.60 284°	0.85 342°	0.59 324°	0.29 39°	0.28 240°	1.24 289°	0.87 250°		0.96 303°	0.56 295°	0.51 228°	0.56 236°	0.94 355°	0.82 277°
K	0.44 150°	0.62 62°	0.46 97°	1.03 7°	0.88 140°	0.39 249°	0.82 181°	0.96 123°		0.42 135°	0.97 154°	0.91 158°	0.84 60°	0.43 181°
L	0.12 219°	0.63 23°	0.28 32°	0.69 91°	0.46 146°	0.68 283°	0.61 211°	0.56 115°	0.42 315°		0.59 168°	0.55 176°	0.82 31°	0.34 245°
Q	0.53 338°	1.17 6°	0.82 2°	0.80 44°	0.24 34°	1.08 313°	0.44 277°	0.51 48°	0.97 334°	0.59 348°		0.09 289°	1.32 13°	0.62 315°
S	0.47 346°	1.15 10°	0.80 8°	0.84 50°	0.27 52°	1.00 315°	0.36 274°	0.56 56°	0.91 338°	0.55 356°	0.09 109°		1.31 17°	0.54 319°
Y	0.94 212°	0.22 235°	0.54 211°	0.76 160°	1.10 189°	1.23 243°	1.44 211°	0.94 175°	0.84 240°	0.82 211°	1.32 193°	1.31 197°		1.12 221°
X	0.24 78°	0.91 37°	0.60 50°	1.01 82°	0.62 113°	0.46 310°	0.38 181°	0.82 97°	0.43 1°	0.34 65°	0.62 135°	0.54 139°	1.12 41°	

Appendix A – Marks

(Additional markers that were omitted from the 2022-2023 ORWA Handbook)

COCKBURN SOUND		
EASTERN CHALLENGER PASSAGE LEAD BEACON	32° 08.7'S	115° 40.2'E
JERVOISE BAY NORTH CARDINAL MARK	32° 08.9'S	115° 45.0'E
JAMES POINT BUOY (Yellow)	32° 13.1'S	115° 44.5'E
OUTER PORT BUOY, CHALLENGER PASSAGE	32° 08.3'S	115° 38.9'E
OUTER STARBOARD BUOY, CHALLENGER PASSAGE	32° 08.3'S	115° 38.8'E
SOUTHERN FLATS EAST CARDINAL MARK	32° 15.2'S	115° 43.5'E
STIRLING CHANNEL GREEN No. 1	32° 12.3'S	115° 44.7'E
STIRLING CHANNEL RED "A"	32° 12.2'S	115° 44.7'E
WOODMAN CHANNEL RED	32° 09.3'S	115° 44.1'E

COCKBURN SOUND CHANNEL		
SOUTH TRANSIT BEACON (FRONT)	32° 08.7'S	115° 42.4'E
SOUTH TRANSIT BEACON (REAR)	32° 09.2'S	115° 42.5'E