



Royal Freshwater Bay Yacht Club

2026 Power Handbook

Power Time Trialling Instructions, Fixtures and Courses

Royal Freshwater Bay Yacht Club
Keane's Point
Peppermint Grove
Western Australia



For all your printing and mailing needs.



Daniels
printing craftsmen

Steve McAlinden
0418 913 160
steve@danielspc.com.au

Daniels Printing Craftsmen
10 Walters Drive
Osborne Park WA 6017
9204 6800



rfbyc

2026 TIME TRIALLING SEASON

PATRON

The Honourable Chris Dawson APM
Governor of Western Australia

VICE PATRONS

Geoff Totterdell, Tony Parker, Peter Ahern, John Anderson

CLUB OFFICERS

Commodore	Tim Cummins	commodore@rfbyc.asn.au
Vice Commodore	Mark Tremain	vicecommodore@rfbyc.asn.au
Rear Commodore (Power)	Dr. Stephen Lewis	rearcommpower@rfbyc.asn.au
Rear Commodore (Sail)	Ken Stevenson	rearcommsail@rfbyc.asn.au
Rear Commodore (Dinghies)	David Tucker	rearcommjuniors@rfbyc.asn.au
Honorary Treasurer	Graeme Hogg	treasurer@rfbyc.asn.au

POWER YACHT COMMITTEE

Rear Commodore Stephen Lewis, David Anderson, Robert Bingham, Alison Clegg,
David Groucutt, James Morrison, Geoff Wells, Sandra Whelan

CHIEF EXECUTIVE OFFICER

Andy Fethers

YACHTING OPERATIONS

Yachting Operations Manager	Debbie Blaauw	yachttops@rfbyc.asn.au
Power & Sailing Administrator	Sharon Skinner	sailadmin@rfbyc.asn.au
Bosun	Nathan Stronach	bosun@rfbyc.asn.au

PH: 9286 8200

rfbyc@rfbyc.asn.au

www.rfbyc.asn.au



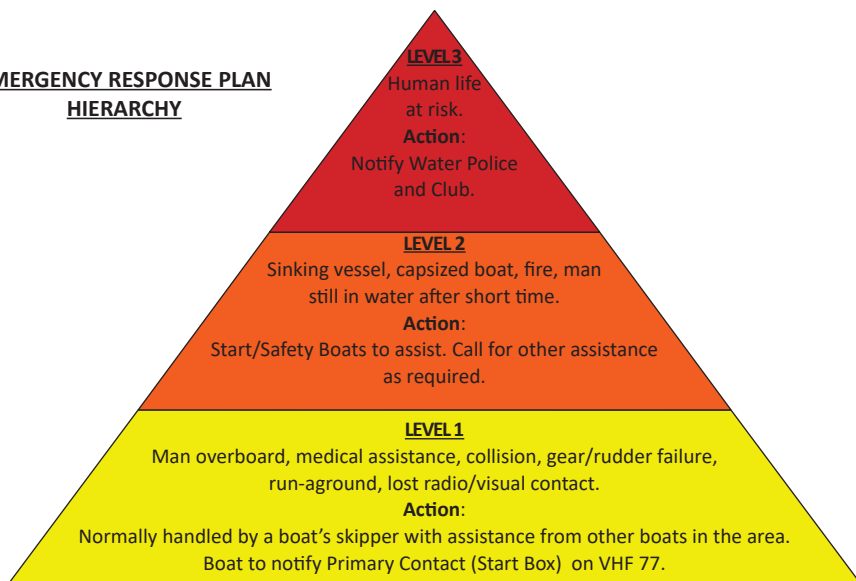
EMERGENCY RESPONSE PLAN

Primary Contact: PRINCIPAL RACE OFFICER - START BOX/START BOAT

If there is an emergency - contact and advise:

- | | | |
|--|----------------|------------------|
| 1. RFBYC Start Boat (Tam Thompson) | VHF 77 | |
| 2. RFBYC Start Box | VHF 77 | 0422 654 833 |
| 3. Water Police | VHF 16, 9 & 67 | 000 or 9442 8600 |
| 4. Club Contacts: | | |
| RFBYC Bosun - Nathan Stronach | 0407 489 870 | |
| RFBYC Yachting Ops - Debbie Blaauw | 0437 968 664 | |
| RFBYC Power Administrator - Sharon Skinner | 0439 799 969 | |

EMERGENCY RESPONSE PLAN HIERARCHY



Other Emergency Contacts:

Sir Charles Gairdner Hospital	6457 3333
Perth Children's Hospital	6456 2222
St John Ambulance	9334 1222
Poisons Info Centre	13 11 26
Swan River Trust	0419 192 845
Medical/Police/Fire Emergency	000

Additional Contacts:

Dept of Transport - Marine Safety	1300 863 308
DER Pollution Watch Hotline	1300 784 782
Wildcare Helpline	9474 9055
Fishwatch	1800 815 507
DoT Coastal Safety	13 11 56

Defib Locations:

- #1 - Located in the in a cabinet on the veranda wall to the left of the main entrance.
- #2 - Located on Tam Thompson Start/Finish Boat. Note: When the boat is not in use, it will be locked and the Defib cannot be accessed.
- #3 - Located in the Dinghy/Junior Clubhouse on the southern wall. Call 0437 968 664 for after hours access.

Disembarkation Location for Ambulance:

The Race Officer on duty will coordinate the closest river access to meet an ambulance. Depending on the location of the incident river access points will include RFBYC Main Wharf Fuel Jetty; RFBYC Dinghy Foreshore and Jo Jo's Jetty, Nedlands.

CONTENTS

	Page
Power Yacht Time Trialling Instructions	4 - 7
Power Yacht Competition	8
Scoring	9
Variable Handicapping System	10 - 11
Season Trophies 2026	12
Important Dates and Social Calendar 2026	13
Power Yacht Program 2026	14 - 18
Power Yacht Course Maps	18 - 42

Yacht GrotTM

FREMANTLE

Proud supporters of the 2026 Kylie Cup Invitation Time Trial

Yacht Grot is the leading marine hardware and accessories supplier (chandlery) based in Fremantle, Western Australia. With a strong reputation for quality advice over 35 years, we can assist the novice recreational sailor through to superyacht captains and others outside the marine industry. Our staff take pride in helping you find solutions for your project, no matter what it may be.

57 Queen Victoria Street, Fremantle
info@yachtgrot.com.au | (08) 9430 6766

OPENING HOURS

Monday - Friday: 08:00 hrs - 16:59 hrs
Saturday: 08:00 hrs - 12:29 hrs | Sunday: Closed

POWER YACHT TIME TRIALLING INSTRUCTIONS

1. RULES

- 1.1 Rules **2021 Rev 2.2** for the sport of Time Trialling can be found at <https://www.cpyawa.com/> . Competitors are expected to be conversant with these rules.
- 1.2 Courses, Elapsed Time Sheets and Start Time Sheets form part of these Time Trialling Instructions. Elapsed Time Sheets take account of restricted speed areas.
- 1.3 In the event of any discrepancies between documents the Time Trialling Instructions will prevail.

2. ENTRIES

- 2.1 Eligible power yachts may be entered in any programmed event in accordance with RFBYC (Inc) Rules and By-Laws. However, the conditions of Club By-Law 5.4 (Helmsman) may be waived by the agreement of the Rear Commodore Power.
- 2.2 A guest skipper must be approved by the Rear Commodore Power who will inform the Regatta Control Officer. No reason for disapproval need be given.
- 2.3 Navigators who do not hold membership at RFBYC will be required to take out an On-Water Pass by contacting the Power Administrator.
- 2.4 For Invitation events, Skippers of competing boats must hold membership of a Yacht Club. If Navigators do not hold membership of a Yacht Club they will be required to take out an On-Water Pass by contacting the Power Administrator.
- 2.5 Special events, including but not limited to the Pathfinder Trophy and Closing Day, will require separate nominations. Courses, start times and elapsed time sheets for these events will only be sent to those nominated.

3. ELIGIBILITY

- 3.1 One Skipper competing in more than one boat on a regular basis Acceptable subject to the prior knowledge and consent of the Power Yacht Committee. Regatta Control Officer to be advised prior to each event of the boat being used. Under these conditions, consistency points will accrue to the SKIPPER.
- 3.2 Casual Change of Skipper/Joint Owners (i.e absence of usual skipper) Subject to relief skipper being eligible in terms of Club Rules, and prior notice being given to the Regatta Control Officer, consistency points shall accrue to the boat whichever of the joint owners shall act as skipper.
- 3.3 Change of Ownership
No accrued points to transfer to new owner where not previously a part owner.

4. ORGANISING AUTHORITY

The Organising Authority is the Royal Freshwater Bay Yacht Club inc.

POWER YACHT TIME TRIALLING INSTRUCTIONS

5. NOTICE TO COMPETITORS / CHANGE IN SAILING INSTRUCTIONS

5.1 All notices will be placed on the official online Notice Board located on the club's website at <https://rfbyc.asn.au/web/pages/power-documents>. Notices will also be emailed to all registered competitors. Failure for an electronic communication to be made or received will not be grounds for redress. This changes CPYA rule 30.1.

5.2 Changes to Time Trialling Sailing Instructions will be emailed to all registered competitors and posted to the online Notice Board located on the club's website at <https://rfbyc.asn.au/web/pages/power-documents> no less than two (2) hours prior to the scheduled start time. Code flag "L" will be displayed from the mast in front of the main Clubhouse. Failure for an electronic communication to be made or received will not be grounds for redress. This changes CPYA rule 30.1.

6. START TIMES, COURSE AND ELAPSED TIME SHEETS

Competitors start times will be emailed to boats that have entered no later than 1700 hours on the Thursday prior to the event. Course and Elapsed Time Sheets will accompany this email. Late nominations will receive their start time no later than two (2) hours prior to the event start.

7. FLAGS

Competing Power yachts shall fly the yellow class flag immediately under their Club burgee.

8. COMPETITION NUMBERS

Identification numbers conforming to CPYA Rule 19.1.1 shall be displayed for the duration of an event and be clearly visible on both sides of a vessel. A vessel whose number is not clearly visible for whatever reason to a checkpoint may not be timed at that checkpoint and shall have no cause to protest. Competition numbers shall be obtained from the Power Administrator.

9. ACTIVATION OF STORM COURSE

The RCO and Power Committee will, after taking the forecast weather conditions into account, determine if the proscribed event will utilise the special Storm Course (Course 223). In this event competitors will be informed at least 24 hours before the programmed start time of the event via email and SMS. A notice will also be placed on the Noticeboard and code L flag flown. Failure for an electronic communication to be made or received will not be grounds for redress. This changes CPYA rule 30.1.

10. RFBYC BUOY IDENTIFICATION

RFBYC East, RFBYC North and RFBYC South Buoys are rectangular orange floats about one metre tall and may have the letters "PY" painted in black on all four sides.

11. RFBYC START/FINISH LINE

An imaginary line drawn from the orange triangle on top of the start box and passing through the East Outer buoy. Competing power yachts are to pass within 6 metres (where possible and safe) of the East Outer buoy on the side designated in the course and elapsed time sheets.

POWER YACHT TIME TRIALLING INSTRUCTIONS

12. SCOTCH SPIT START LINE

An imaginary line drawn from the start boat and passing through Scotch Spit. The start boat will be anchored on the west side of the spit post and all participating boats will pass within 6 metres (where possible and safe) of the spit post when starting, heading in a generally southerly direction leaving Scotch Spit to port, or when in a generally northerly direction leaving Scotch Spit to starboard.

13. MIDDLE SPIT START LINE

An imaginary line drawn from the start boat through Middle Spit. The start boat will be anchored on the southwest side of the spit post and all participating boats will pass within 6 metres (where possible and safe) of the spit post when starting, heading in a generally westerly or easterly direction (depending on the course) leaving Middle Spit generally to the northeast.

14. BURNSIDE SPIT START LINE

(Approach in an easterly direction)

An imaginary line drawn from the start boat and passing through Burnside Spit. The start boat will be anchored on the north side of the spit post and all participating boats will pass within 6 metres (where possible and safe) of the spit post when starting, heading in a generally easterly direction leaving Burnside Spit to starboard. The maximum starting speed is to be eight (8) knots.

15. CLAREMONT SPIT START LINE

An imaginary line drawn from the start boat and passing through Claremont Spit. The start boat will be anchored on the east side of the spit post and all participating boats will pass within 6 metres (where possible and safe) of the spit post when starting, heading in a generally south easterly direction leaving Claremont Spit to starboard. The maximum starting speed is to be eight (8) knots.

16. ARMSTRONG SPIT START LINE

An imaginary line drawn from the start boat and passing through Armstrong spit. The start boat will be anchored on the south side of the spit post and all participating boats will pass within 6 metres (where possible and safe) of the spit post when starting in a westerly direction, leaving Armstrong spit to starboard.

17. RFBYC NORTH BUOY (North of Start Box)

Designated as a mark of the courses and will be taken on the side indicated on the elapsed time sheets. Competing boats may be timed on the buoy.

18. RFBYC SOUTH BUOY

This mark is located on the extension of an imaginary line drawn through the southern end of 'E' jetty, and in line with North Outer and East Outer Buoys. Competing boats may be timed on the buoy.

POWER YACHT TIME TRIALLING INSTRUCTIONS

19. **CAPORN STREET EXTENSION**

When nominated in the Sailing Instructions is 'up to' and shall be left to starboard. When the bow of a power yacht has passed an imaginary line which is the prolongation of the line of light posts on the north side of Caporn Street, a turn to port shall be made. Caporn Street is not a checkpoint for time but may be checked for correct turning procedure. Should a boat be observed failing to perform the correct turning procedure a 10 point penalty shall be applied.

20. **NAVIGATION MARKS**

Power yachts shall keep to the indicated side of cardinal marks.

21. **CHECK POINTS**

Where power yachts are required to pass or leave a mark of the course by 15 metres or more it will not be a checkpoint for scoring purposes.

22. **DECLARATIONS**

Power yachts crossing the finishing line signify that they have sailed the course correctly and complied with the rules in accordance with these Sailing Instructions.

23. **RESULTS**

Unless otherwise notified, results will be declared in the Clubhouse as soon as possible after an event. The results will be displayed on the Club website and on the Power notice board.

24. **PROTESTS OR REDRESS**

Procedure for protests will be in accordance with the CPYA Rules 30 to 40. An extension of the time limit may be granted in special circumstances by the Regatta Control Officer.

Any requests for redress shall be made to the Regatta Control Officer within 30 minutes of posting of results. This changes CPYA Rule 30.4

25. **RESPONSIBILITY**

Attention is drawn to CPYA Rule 23.2 which states: "It shall be the sole responsibility of each power yacht skipper to decide whether or not to start or to continue in an event."

2026 POWER YACHT COMPETITION

The regular weekly competition will consist of one fleet of boats.

1. WEEKLY

There will be a pennant for lowest points lost, together with 1st, 2nd and 3rd calculated in accordance with the variable handicap system. If the Club event has a trophy sponsor, then a prize will also be awarded to the lowest points, 1st, 2nd and 3rd placegetters.

2. ANNUALLY

2.1 Club Championship

The Club Championship shall be decided based on aggregate lowest points lost for the 12 best performances from the total number of consistency events. If 12 or less events are held the Club Championship will be decided based upon the aggregate lowest points lost for the number of events held minus the highest scoring event (one drop).

2.2 Club Consistency Championship

A “consistency event” means consistency in attendance and performance of the boat. Consistency will be decided by the lowest aggregate score achieved from the 12 best performances from the total number of consistency events. If 12 or less events are held the Club Consistency Championship will be decided based upon the aggregate lowest score for the number of events held minus the highest scoring event (one drop).

Consistency events shall be marked with a # on the Power Yacht Program.

The winner of the Club Championship Trophy is ineligible to win this trophy.

2.3 Perpetual Trophies

Trophies will be awarded annually. See Season Trophies on page 12.

3. Teams Events/State Championships/Invitation Events

Checkpoint times from these events shall be imported to RFBYC Club records and such events will be scored as Club Championship and Consistency events, when noted as such on the Power Yacht Program.

CLUB POWER YACHT EVENT SCORING

The RFBYC Consistency Series will utilise the Low Point Scoring System.

Each boat which finishes an event shall score points as follows:-

First Place	1	Fourth Place	4
Second Place	2	Fifth Place	5
Third Place	3	Sixth Place	6

Each place thereafter Add one point

The score for a retirement shall be the number of starters plus 1.

The score for a disqualification shall be the score for a last place finish plus 10% of the number of starters in that event with decimals being raised to the next whole number.

A boat entered in the Consistency Series which does not start will be scored the number of starters plus 1.

For the purposes of the Club Championship, a power yacht which retires shall score the points equal to the number of power yachts which started correctly in that heat plus six points.

For the purposes of the Club Championship, a power yacht which is disqualified for any reason shall score the points for a last place finish plus twelve points

TIES

Should there be a tie on total points for two or more boats for either the Championship or Consistency Trophy, the tie shall be broken in favour of the one with the most first places and, should any such boats remain tied, the most second places and so on, if necessary, for all events which count for total points. Should the tie remain, then it shall stand as the final placing for the season.

For the purpose of this rule only, a tie for first, second, third place, etc., in any one event during the season, shall count as a first, second or third place, etc, for deciding ties for the Championship and Consistency Trophies. e.g. two boats tied on second place will both score 2.

PENALTIES

Scoring Penalties will be in accordance with the CPYA Rules.

VARIABLE HANDICAPPING SYSTEM

This handicapping system is performance based and reflects a competitor's best performances during the competitor's last 5 starts, where the competitor has started, proceeded fairly around the course set for the day and passed through the finish line without disqualification.

From the most recent 5 performances the best 3 performances for a competitor are averaged giving the competitor its calculated handicap.

Your handicap is your average points lost per mark as described below.

The performance of a competitor on any day is measured by dividing the total number of points lost during a competitor's rounding of the course, by the number of manned checkpoints i.e. if there are 8 checkpoints and the competitor loses 30 points the performance for the day will be 30 divided by 8 which equals 3.75 assuming that no more than 5 points is lost on any one checkpoint. The best performances will be the lowest figures after making the above calculations.

Where a competitor loses more than 5 points at any manned checkpoint then for handicap calculation purposes only, the points lost at that mark will be reduced to 5.

Sample Calculation of Handicap:

Performance No.	1	2	3	4	5
Event Performance	3.75	2.5	4.0	2.25	2.6
Best Performance		*			
Handicap			2.45		

The manned checkpoint average is the handicap. When a competitor completes performance No. 6 then performance No. 1 is deleted from the calculations. If performance No. 1 was being used to average the best 3 performances, then when performance No. 6 is recorded the elimination of performance No. 1 creates a recalculation of the handicap.

If performance No. 6 was better than the best 3 average in adding No. 6 to the list and deleting No. 1 then the handicap will be reduced.

If performance No.6 was worse than the average (handicap) then elimination of No.1 when being used to calculate the average will either not change the average or will increase the average. The average will be unchanged if performance No.1 is equal to another performance not being used to calculate the average.

VARIABLE HANDICAPPING SYSTEM

The same recalculation occurs with performance No.7 and so on. We now have an up to date calculation of recent performance by all those who have completed 5 events. Competitors without handicap or performance will be assessed by the handicapper. There are further rules for competitors with less than 5 performances when handicaps are given.

Competitor handicaps will be revised at the handicapper's discretion. The maximum handicap will not exceed 5 at any time.

Application of Handicap:- Your handicap is multiplied by the number of manned checkpoints on the course of the day and then subtracted from the points lost during the round. If the result is a negative figure, you have performed better than your handicap. If the result is a positive figure, you have performed worse than your handicap.

Example 1:

Manned Checks	9
Handicap	2.2 per check point (2.2 x 9 = 19.8)
Points Lost	20
Calculation	20 - 19.8 (handicap) = +0.2

Example 2:

Manned Checks	9
Handicap	1.2 per check point (1.2 x 9 = 10.8)
Points Lost	10
Calculation	10 - 10.8 (handicap) = -0.8

The +0.20 in Example 1 and -0.8 in Example 2 are the adjusted points scores which are compared with other competitor performances and the lowest score shall be the winner on handicap. Example 2 is a better performance than example 1.

Competitors which have not previously competed will be started on a handicap of 1.5.

Any competitor that has previously competed but has not time trialled in the preceding two years shall have its handicap reset to 1.5.

ALL SEASON EVENTS TROPHIES FOR 2026

SEASON TROPHIES

Club Championship

Championship Winning Skipper — The Bernadene Trophy donated by the late William Dunn
Championship Winning Navigator — The Pat Healy Barometer Trophy donated by the late Pat Healy

Championship Runner-Up Skipper - Royal Freshwater Bay Yacht Club Perpetual Trophy
Championship Runner-Up Navigator - Royal Freshwater Bay Yacht Club Perpetual Trophy

Club Consistency Championship

Consistency Winning Skipper – The WM Schofield Shield
Consistency Winning Navigator – The LEM Shenton Model

The Avalon III Perpetual Trophy

For the lowest number of actual points lost in any one consistency event

Pat Healy Perpetual Trophy

Awarded for lowest net score in any one consistency event (net score being the score after the handicap is applied). The same qualifying criteria applies to that applied for the Consistency Series.

The Naiad Trophy

For the most improved skipper selected by the Power Yacht Committee. The Naiad Trophy was donated by the late A E Taylor and can only be won by an individual skipper once.

The Rear Commodore Power Trophy

To be decided by the Rear Commodore Power for participation during the current Season. Donated by past Rear Commodore Power M Woodworth.

The Robert Cameron Eight Knot Cup Trophy

Awarded to the RFBYC boat, competing at or below 8 knots in speed, with the lowest cumulative club consistency score from all 8 State Championship events. In the event all 8 State Championship events are not held it will be the cumulative score from those events that are held. The Eight Knot Cup has been kindly donated by the late Robert Cameron.

Hiawatha Trophy

Awarded to the lowest scoring Club boat, that was launched prior to 1975, in the Club Championship series.

Pathfinder 25 Trophy

For least points lost on handicap to the boat that has a participating skipper, navigator or crew member aged 25 years or under

IMPORTANT DATES FOR 2026 SEASON

RFBYC OPENING DAY Saturday, 2 May 2026
CPYA STATE HEAT #1 - RFBYC Saturday, 23 May 2026
LLOYD ANDERSON INVITATION TIME TRIAL incorporating CPYA STATE HEAT #2 - CYC Sunday, 7 June 2026
RFBYC CHARTER DAY TIME TRIAL Saturday, 16 June 2026
SEAFARERS INVITATION TIME TRIAL incorporating CPYA STATE HEAT #3 - RPYC Saturday, 20 June 2026
SOCIAL LUNCH CRUISE Saturday, 4 July 2026
RFBYC VICE PATRONS TROPHY DAY TIME TRIAL Saturday, 27 June 2026
TI-TU INVITATION TIME TRIAL CPYA STATE HEAT #4 - SoPYC Saturday, 11 July 2026
CPYA STATE HEAT #5 - SoPYC Saturday, 25 July 2026
RFBYC JOHN COWEN MEMORIAL TROPHY DAY TIME TRIAL Saturday, 1 August 2026
CPYA STATE HEAT #6 - RPYC Saturday, 8 August 2026
RFBYC JM ZEFFERT MEMORIAL INVITATION TIME TRIAL (Kylie Cup) incorporating CPYA STATE HEAT #7 Sunday, 30 August 2026
RFBYC PATHFINDER 25 TROPHY TIME TRIAL Saturday, 5 September 2026
CPYA STATE HEAT #8 - CYC Saturday, 12 September 2026
RFBYC POWER YACHT CLOSING DAY (Guest Skipper/Navigator) Saturday, 19 September 2026
CPYA PRIZE NIGHT Date TBA - Royal Perth Yacht Club

2026 POWER YACHT PROGRAM

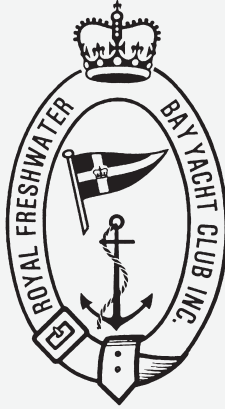
DAY	DATE	EVENT	COURSE	TIME
Saturday 2 May 2026		THE DANIELS PRINTING CRAFTSMEN OPENING DAY INVITATION TIME TRIAL Lowest Points Lost	201	1330 Event 1
Saturday 9 May 2026		THE QUEST TROPHY CLUB TIME TRIAL Lowest Points Lost 1st 2nd 3rd	202	1400 Event 2
Saturday 16 May 2026 #		THE SUNNY TROPHY CLUB TIME TRIAL Lowest Points Lost 1st 2nd 3rd	203	1400 Event 3
Saturday 23 May 2026 #		THE OCEANEER MARINE BROKERS TROPHY TIME TRIAL incorporating CPYA State Teams Event #1 at RFBYC Lowest Points Lost 1st 2nd 3rd	CPYA Course 2	1330 Event 4

DAY / DATE	EVENT	COURSE	TIME
Saturday 30 May 2026	BYE - WESTERN AUSTRALIA DAY LONG WEEKEND		
Sunday 7 June 2026 #	THE MAKO TROPHY TIME TRIAL Held in conjunction with the CYC Lloyd Anderson Invitation incorporating CPYA State Teams Event #2 at CYC Lowest Points Lost 1st 2nd 3rd	322	0930 Event 5
Saturday 13 June 2026 #	THE HAVANA TROPHY CLUB TIME TRIAL competing for the RFBYC CHARTER DAY PERPETUAL TROPHY Lowest Points Lost 1st 2nd 3rd Lowest points lost—Charter Day Trophy	206	1400 Event 6
Saturday 20 June 2026 #	THE GRAND MARNIE TROPHY TIME TRIAL Held in conjunction with the RPYC Seafarer Invitation incorporating CPYA State Teams Event #3 at RPYC Lowest Points Lost 1st 2nd 3rd	122	1330 Event 7

DAY / DATE	EVENT	COURSE	TIME
Saturday 27 June 2026 #	<p align="center">THE SAFARI II TROPHY CLUB TIME TRIAL competing for the VICE PATRONS' MEDALLION (Based on Lowest Points)</p> Lowest Points Lost 1st 2nd 3rd	208	1400 Event 8
Saturday 4 July 2026 #	<p align="center">Bye - No Time Trialling Power Social Lunch Cruise</p>		
Saturday 11 July 2026 #	<p align="center">THE GITANA TROPHY TIME TRIAL Held in conjunction with the SoPYC Ti-Tu Invitation incorporating CPYA State Teams Event #4 at SoPYC</p> Lowest Points Lost 1st 2nd 3rd	412	1330 Event 9
Saturday 18 July 2026 #	<p align="center">THE WAVERLY TROPHY CLUB TIME TRIAL</p> Lowest Points Lost 1st 2nd 3rd	211	1400 Event 10
Saturday 25 July 2026 #	<p align="center">THE PHOENIX TROPHY Held in conjunction with CPYA State Teams Event #5 at SoPYC</p> Lowest Points Lost 1st 2nd 3rd	CPYA Course 3	1400 Event 11

DAY / DATE	EVENT	COURSE	TIME
Saturday 1 August 2026 #	<p style="text-align: center;">THE MOJO TROPHY TIME TRIAL competing for the JOHN COWEN MEMORIAL TROPHY Donated by the Cowen Family</p> Lowest Points Lost 1st 2nd 3rd	213	1400 Event 12
Saturday 8 August 2026 #	<p style="text-align: center;">THE AVALON TROPHY TIME TRIAL Held in conjunction with CPYA State Teams Event #6 at RPYC</p> Lowest Points Lost 1st 2nd 3rd	CPYA Course 4	1330 Event 13
Saturday 15 August 2026 #	<p style="text-align: center;">THE EASTERN POINT TROPHY CLUB TIME TRIAL</p> Lowest Points Lost 1st 2nd 3rd	214	1400 Event 14
Saturday 22 August 2026 #	<p style="text-align: center;">THE BRUNSWICK TROPHY TIME TRIAL</p> Lowest Points Lost 1st 2nd 3rd	215	1400 Event 15

DAY / DATE	EVENT	COURSE	TIME
Sunday 30 August 2026 #	<p style="text-align: center;">THE YACHT GROT KYLIE CUP INVITATION TIME TRIAL</p> <p style="text-align: center;">Competing for the JM Zeffert Perpetual Trophy Incorporating CPYA State Teams Event #7</p> Lowest Points Lost 1st 2nd 3rd	221	0930 Event 16
Saturday 5 September 2026 #	<p style="text-align: center;">THE XINDI TROPHY TIME TRIAL</p> <p style="text-align: center;">competing for the THE PATHFINDER 25 TROPHY</p> <p style="text-align: center;">(Least points lost on handicap to the boat that has a crew member, skipper or navigator on board aged 25 years or under).</p> Lowest Points Lost 1st 2nd 3rd	217	1400 Event 17
Saturday 12 September 2026 #	<p style="text-align: center;">THE SIRIUS TROPHY CLUB TIME TRIAL</p> <p style="text-align: center;">held in conjunction with CPYA State Teams Event #8 at CYC</p> Lowest Points Lost 1st 2nd 3rd	CPYA Course 5	1400 Event 18
Saturday 19 September 2026	<p style="text-align: center;">THE POSTRAX CLOSING DAY CLUB TIME TRIAL</p> Lowest Points Lost Guest Skipper..... Guest Navigator.....	219	1400 Event 19



POWER YACHT COURSE MAPS

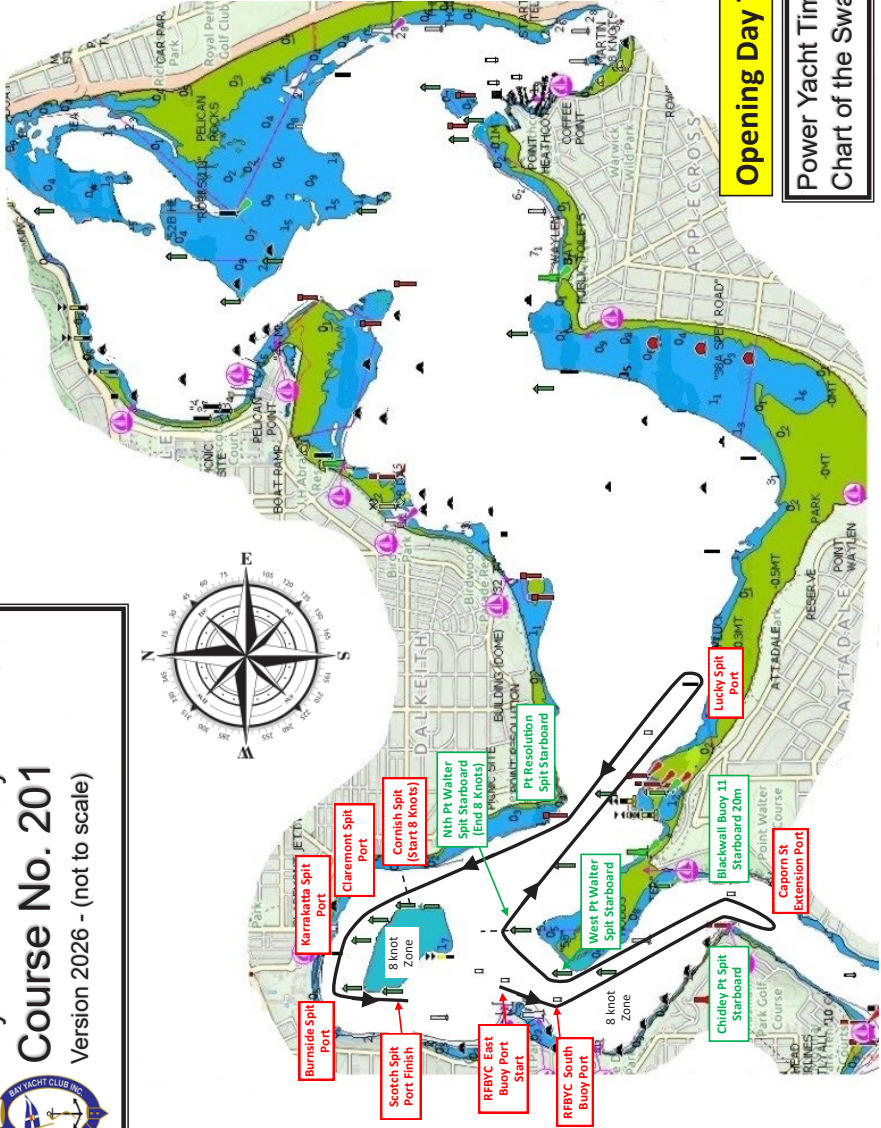
ELAPSED TIMES

for each course are available to view
by scanning the QR Code below



COURSE 201

Royal Freshwater Bay Yacht Club
Course No. 201
 Version 2026 - (not to scale)

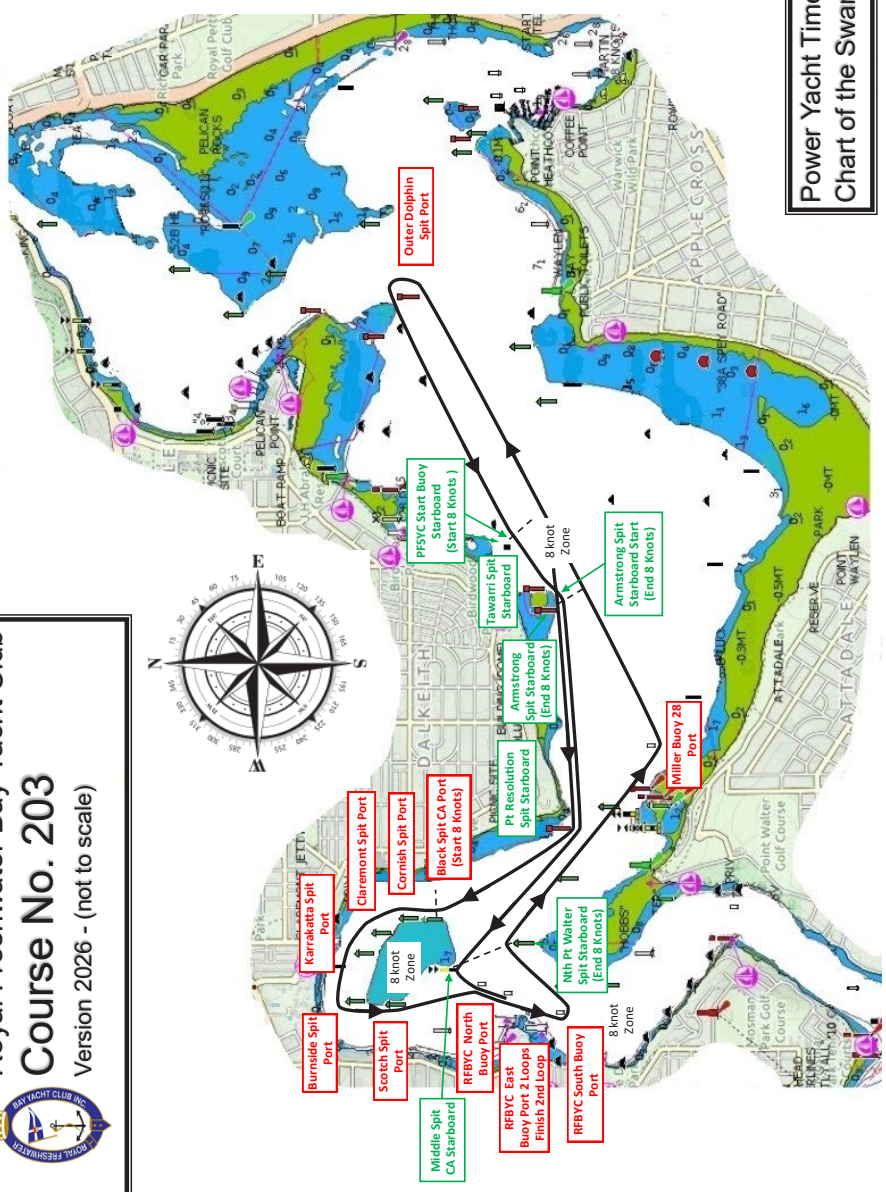


Opening Day Time Trial

**Power Yacht Time Trialling
 Chart of the Swan River**

COURSE 203

Royal Freshwater Bay Yacht Club
Course No. 203
 Version 2026 - (not to scale)

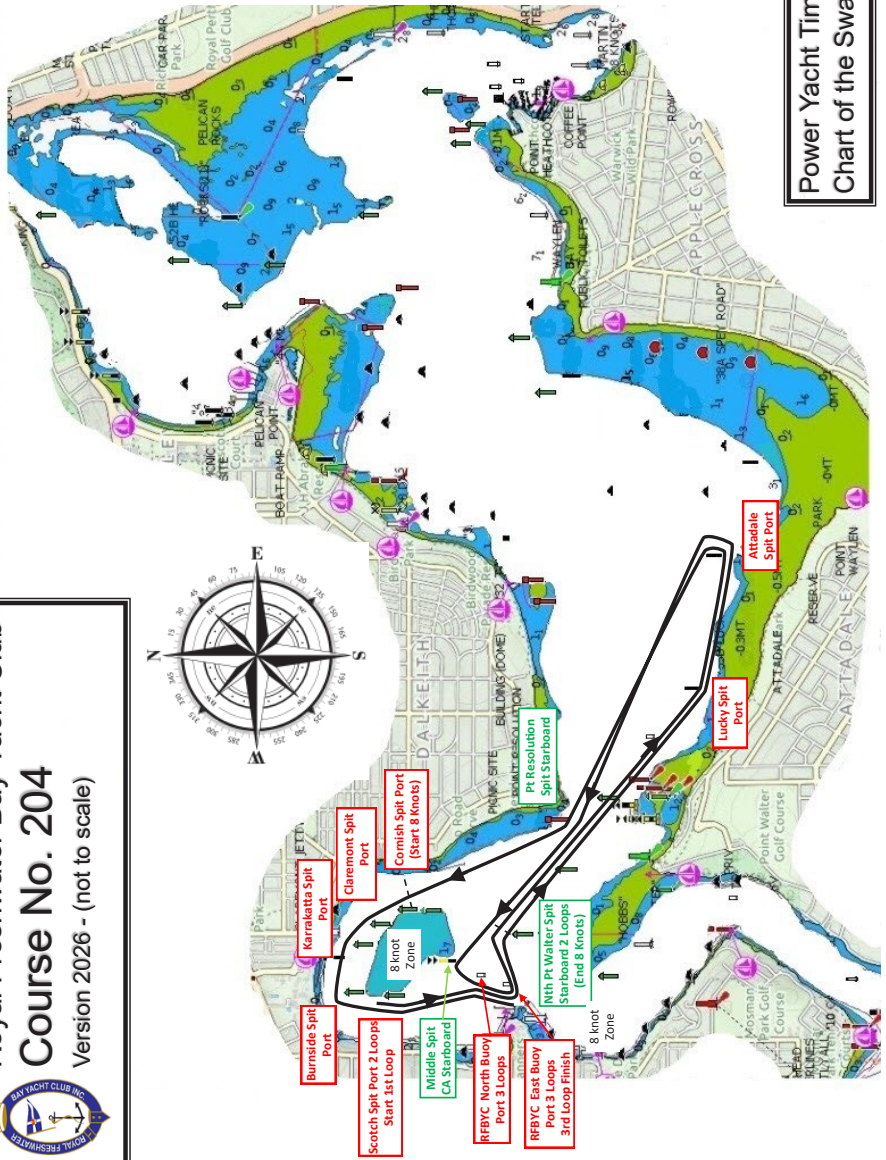



Power Yacht Time Trialling
 Chart of the Swan River

COURSE 204

Power Yacht Time Trialling Chart of the Swan River

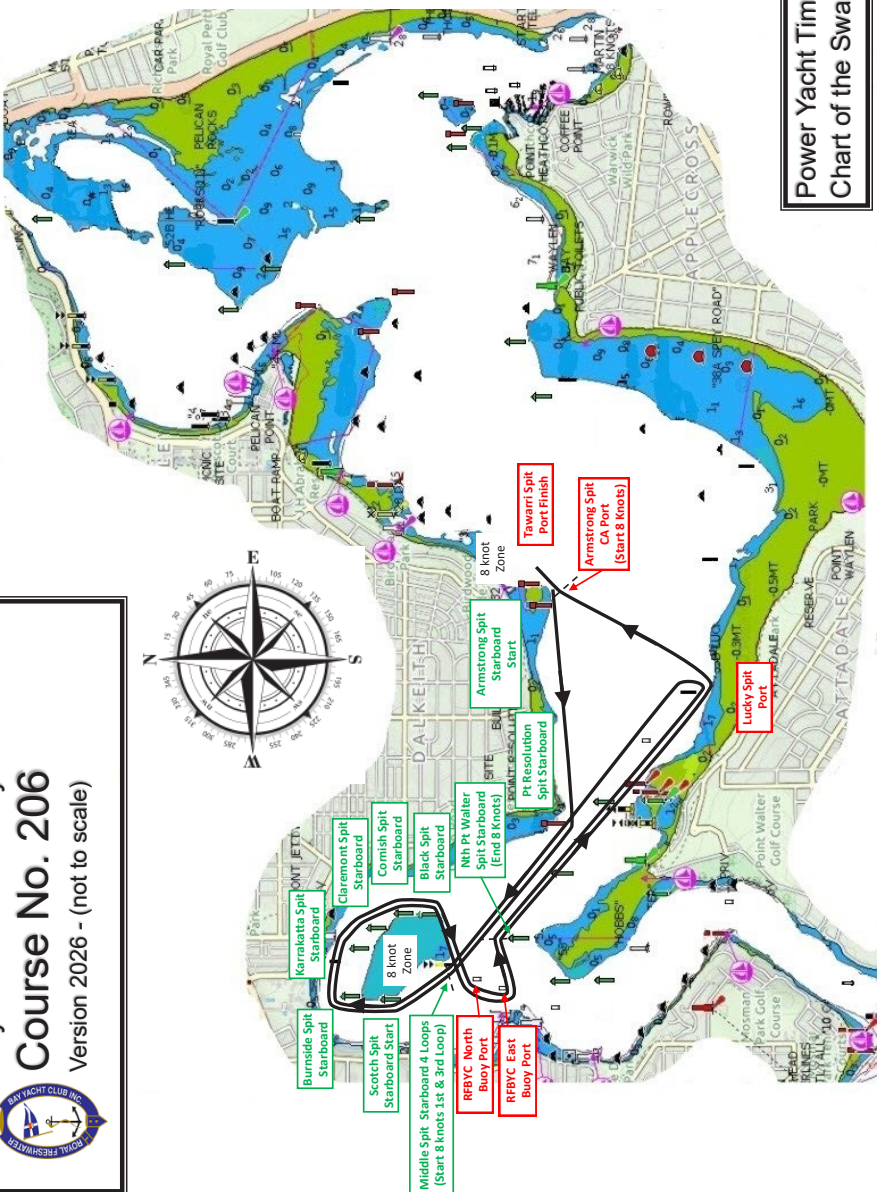

Royal Freshwater Bay Yacht Club
Course No. 204
 Version 2026 - (not to scale)



COURSE 206

Power Yacht Time Trialling Chart of the Swan River

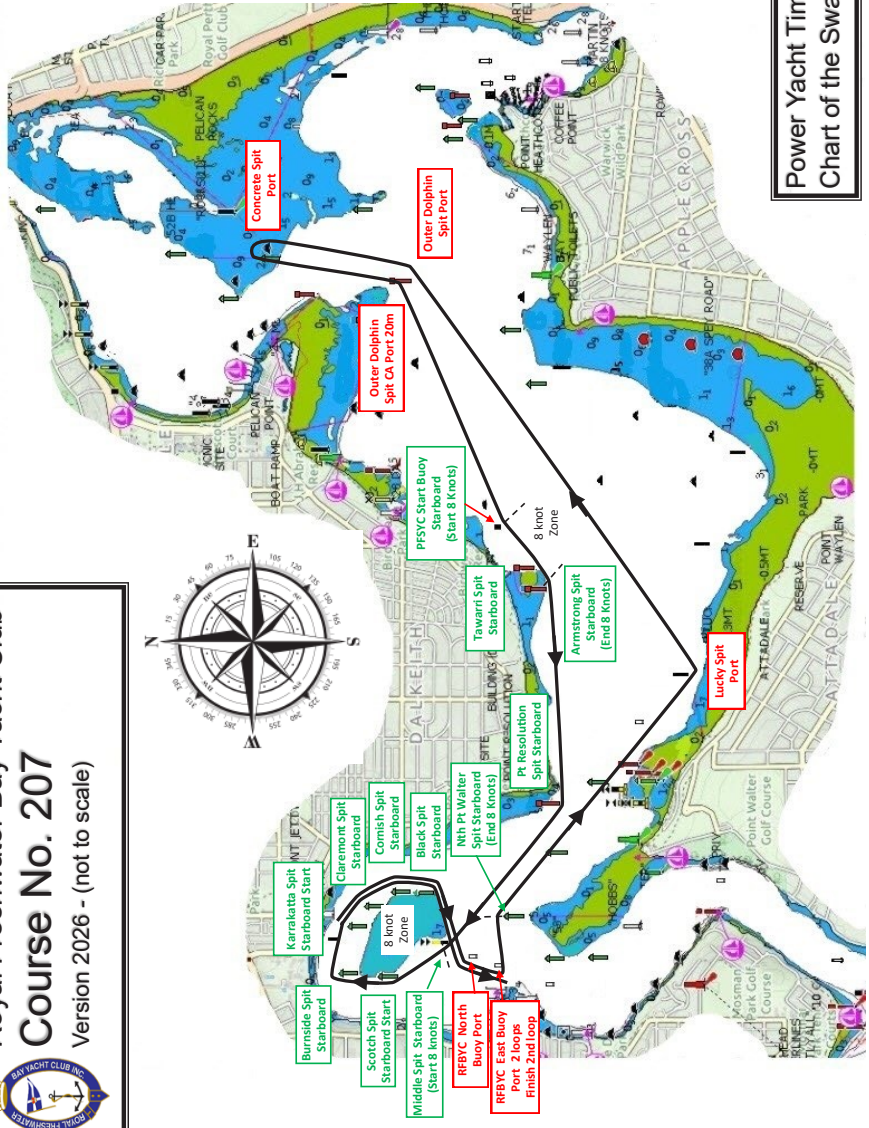

Royal Freshwater Bay Yacht Club
Course No. 206
 Version 2026 - (not to scale)



COURSE 207

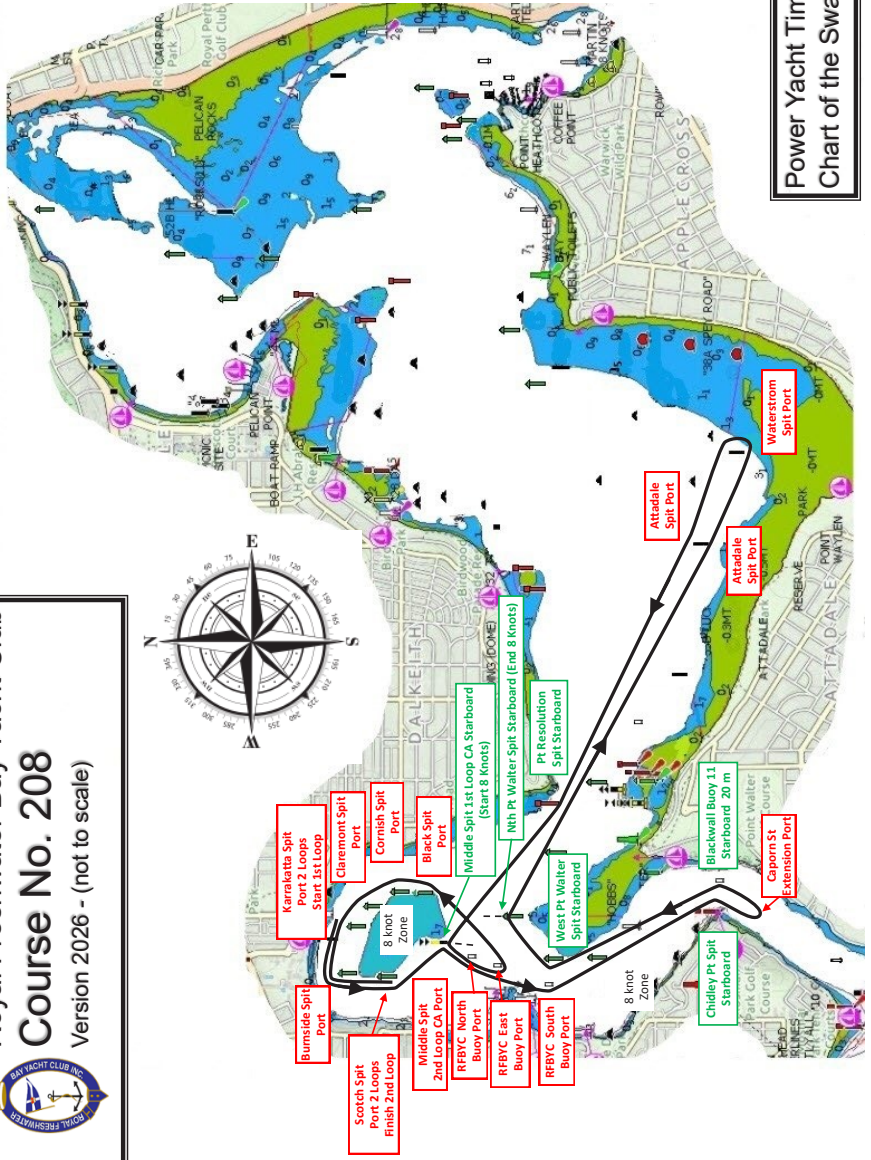
Power Yacht Time Trialling
Chart of the Swan River

Royal Freshwater Bay Yacht Club
Course No. 207
 Version 2026 - (not to scale)



COURSE 208


Royal Freshwater Bay Yacht Club
Course No. 208
 Version 2026 - (not to scale)

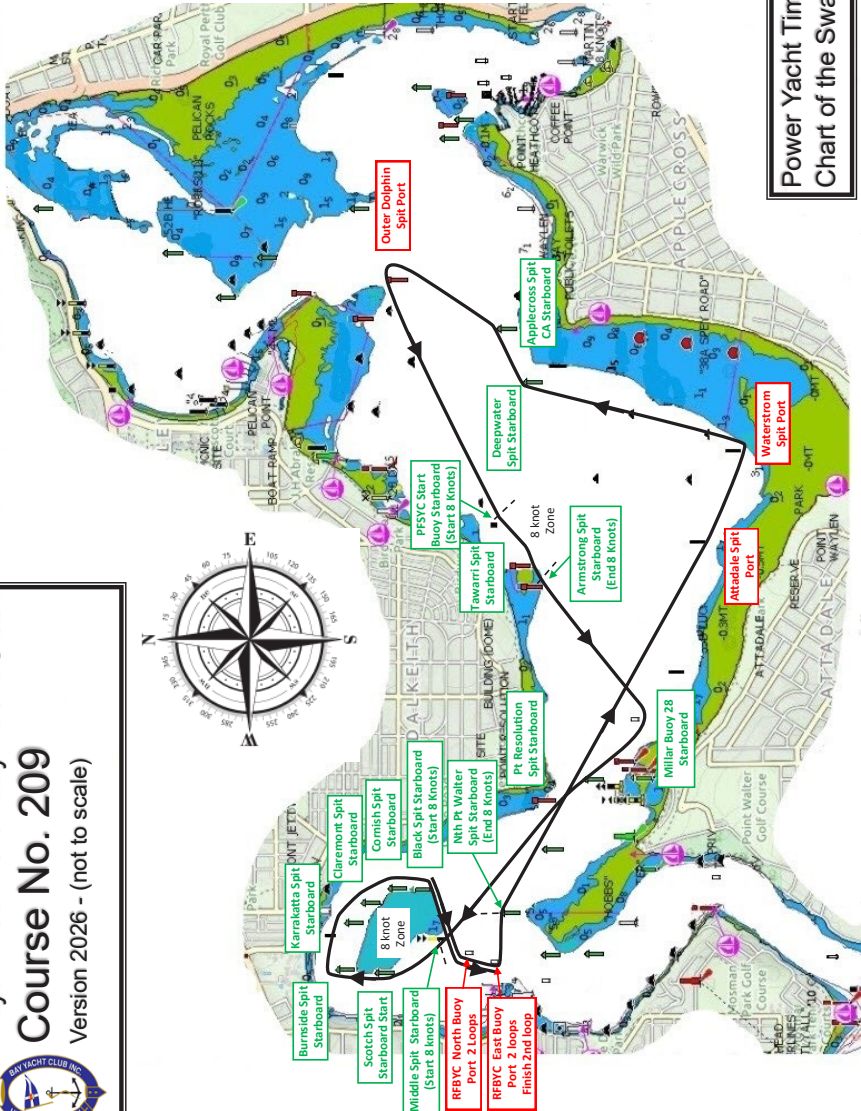


Power Yacht Time Trialling
Chart of the Swan River

COURSE 209

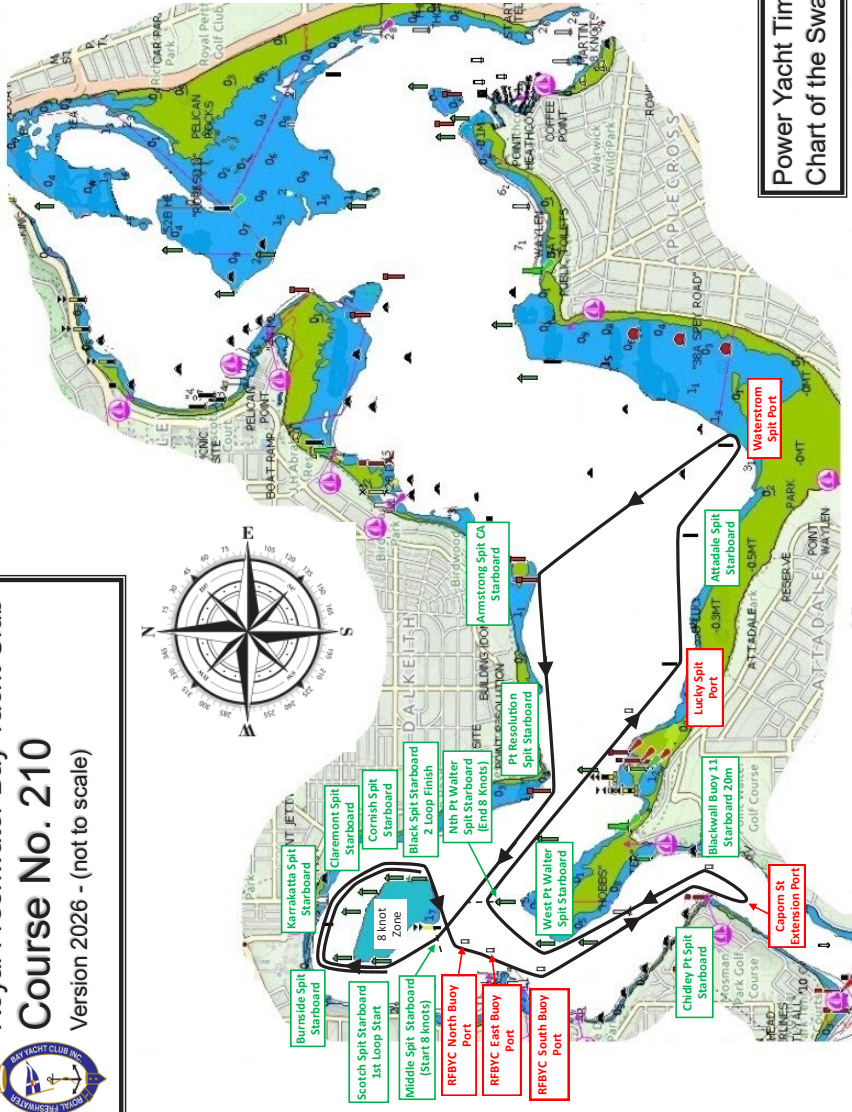
Power Yacht Time Trialling Chart of the Swan River

Royal Freshwater Bay Yacht Club
Course No. 209
 Version 2026 - (not to scale)

COURSE 210

Royal Freshwater Bay Yacht Club
Course No. 210
 Version 2026 - (not to scale)

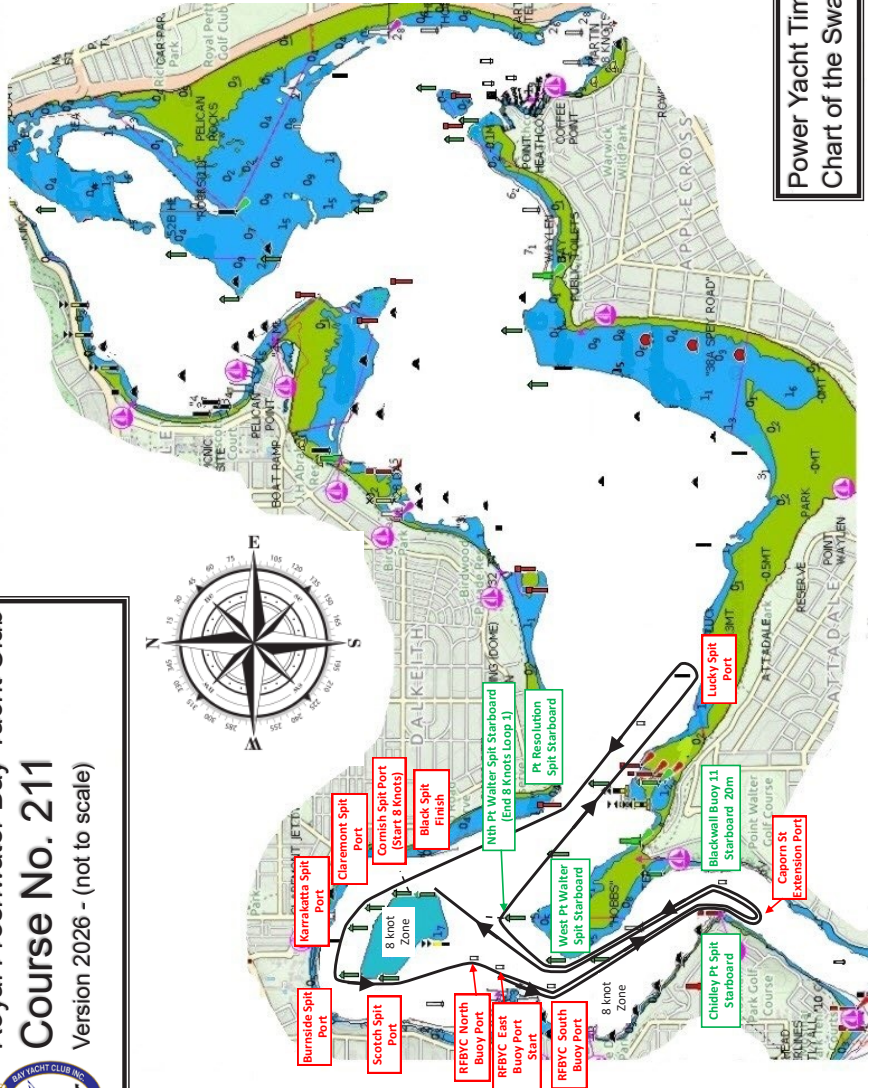


**Power Yacht Time Trialling
 Chart of the Swan River**

COURSE 211

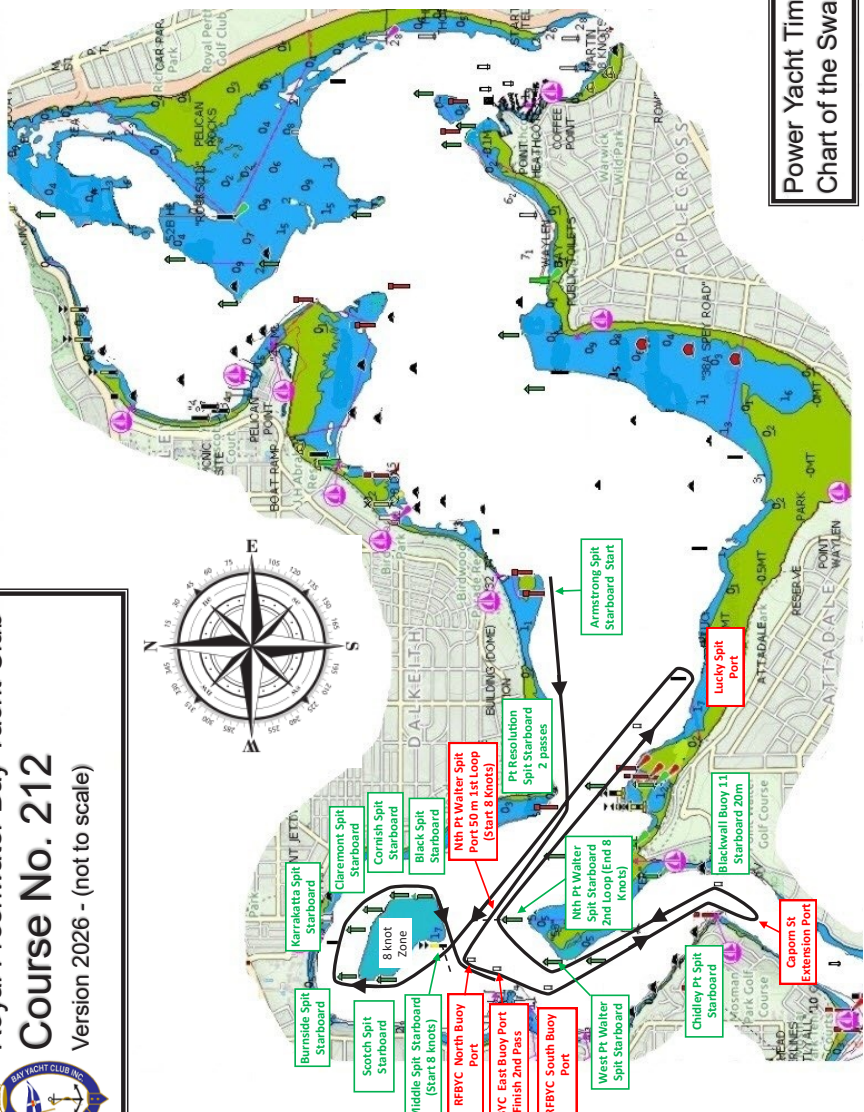
Power Yacht Time Trialing
Chart of the Swan River

Royal Freshwater Bay Yacht Club
Course No. 211
 Version 2026 - (not to scale)



COURSE 212

Royal Freshwater Bay Yacht Club
Course No. 212
 Version 2026 - (not to scale)

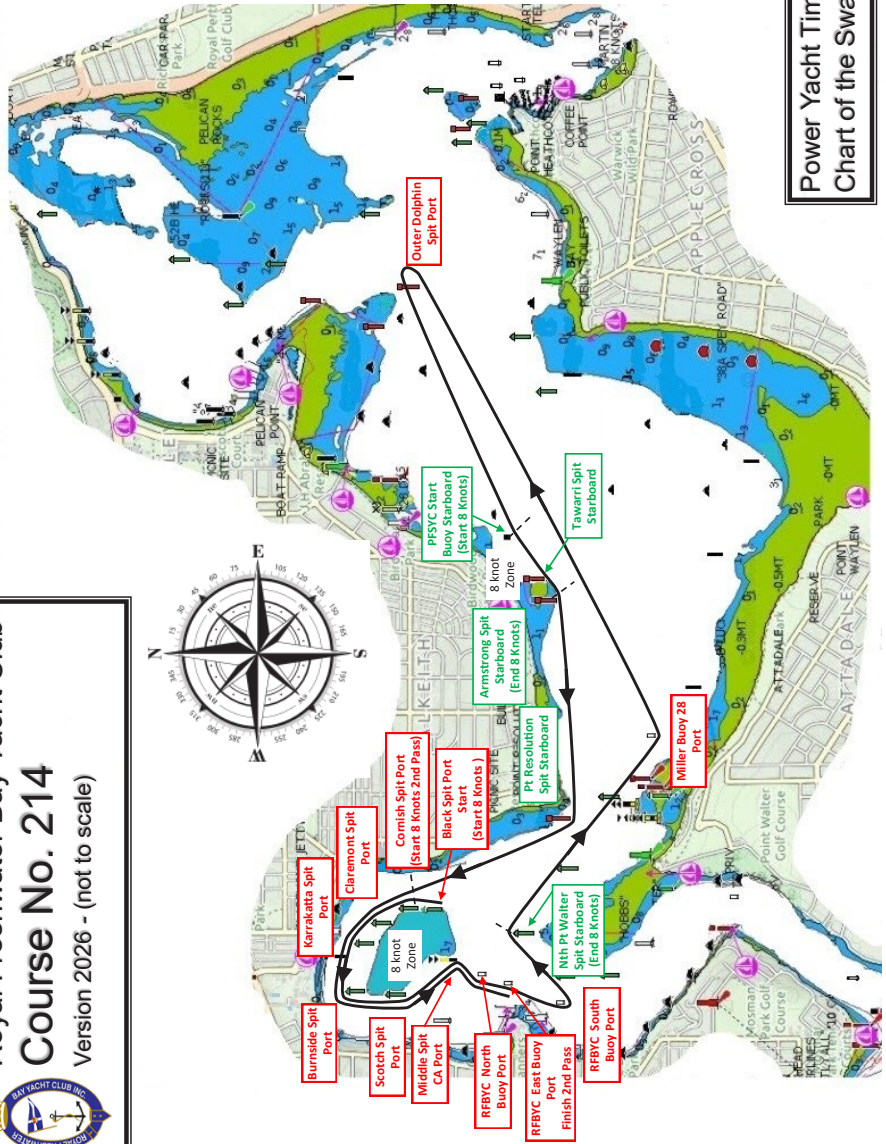


Power Yacht Time Trialling
 Chart of the Swan River

COURSE 213

Power Yacht Time Trialling
Chart of the Swan River

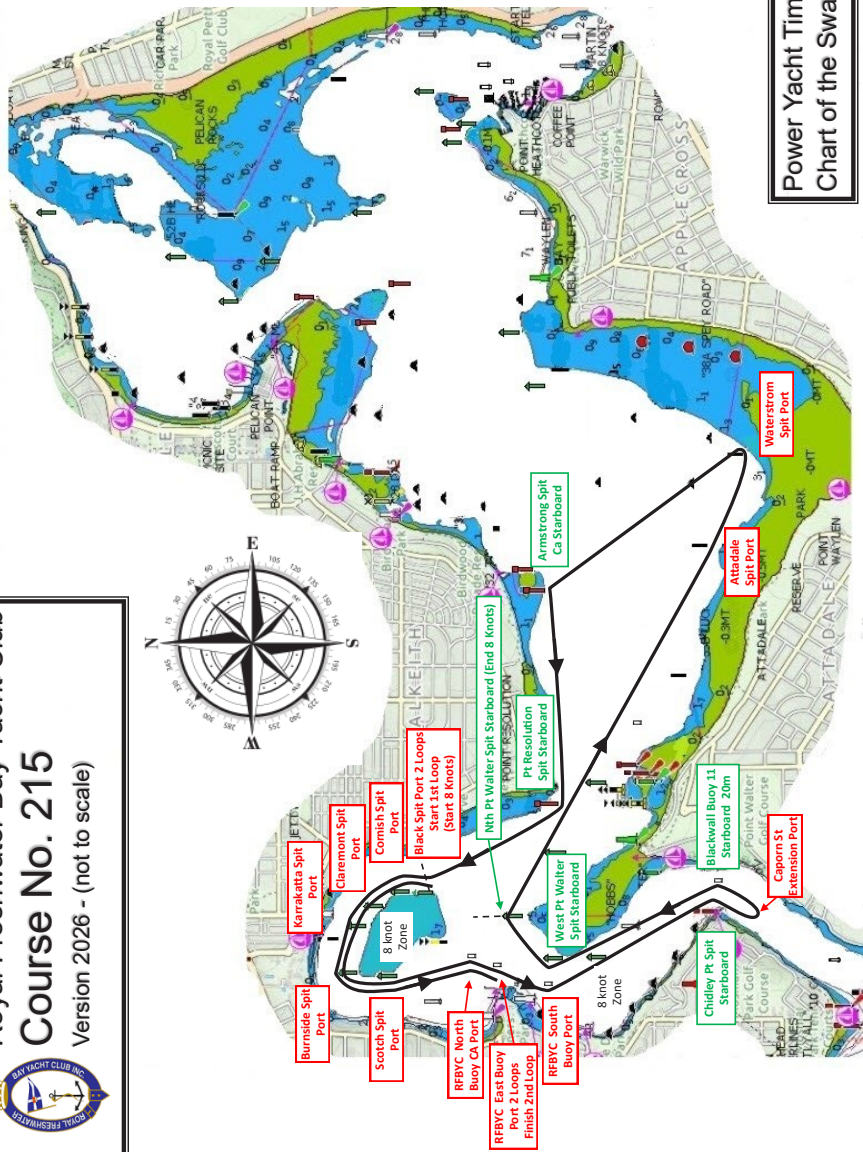
Royal Freshwater Bay Yacht Club
Course No. 214
 Version 2026 - (not to scale)



COURSE 215

Power Yacht Time Trialling Chart of the Swan River

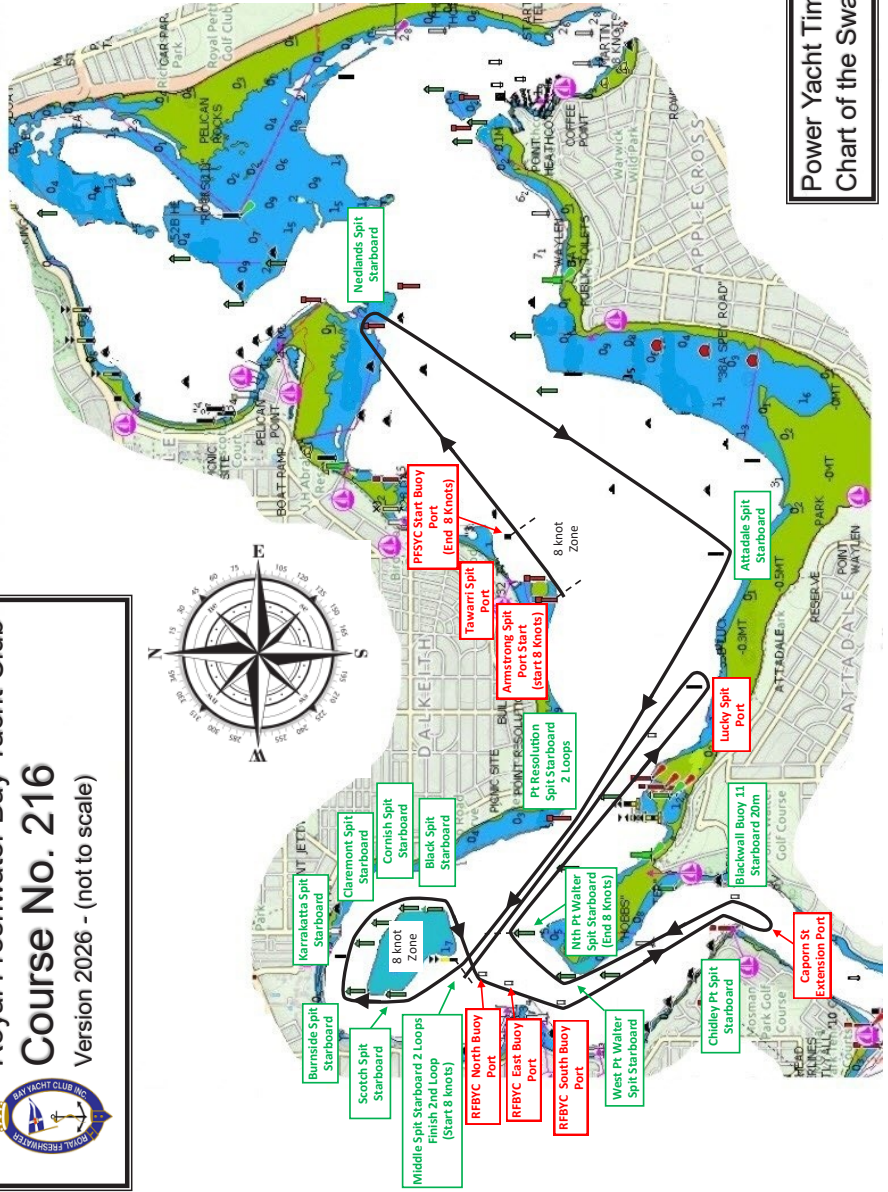
Royal Freshwater Bay Yacht Club
Course No. 215
 Version 2026 - (not to scale)

COURSE 216

Power Yacht Time Trialling
Chart of the Swan River

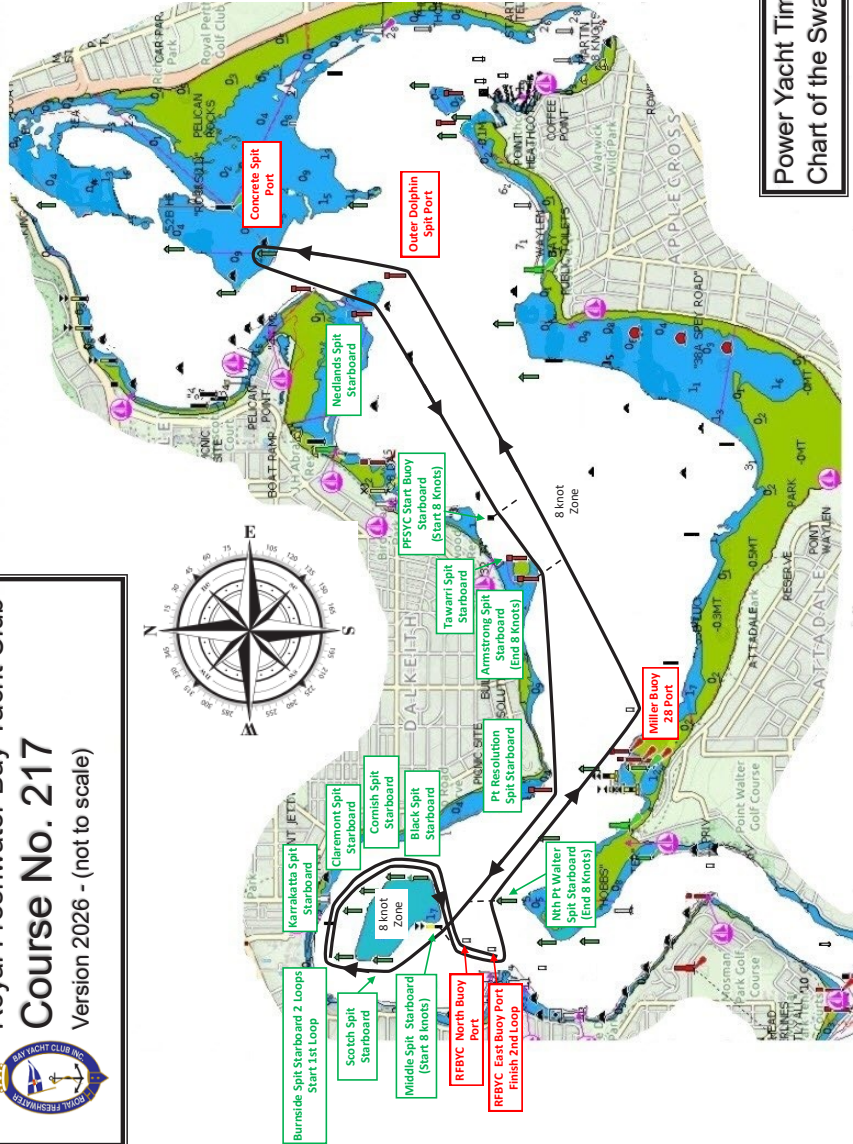
Royal Freshwater Bay Yacht Club
Course No. 216
 Version 2026 - (not to scale)



COURSE 217

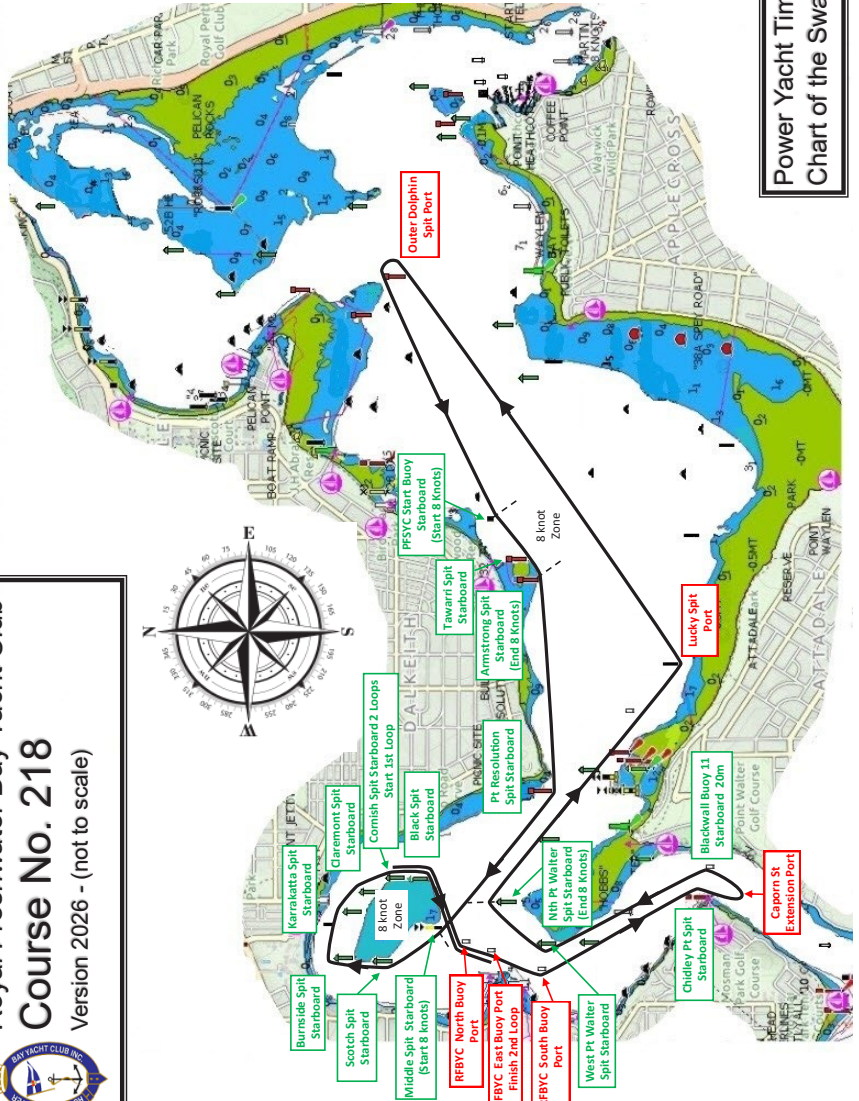
Power Yacht Time Trialling Chart of the Swan River

Royal Freshwater Bay Yacht Club
Course No. 217
 Version 2026 - (not to scale)



COURSE 218

Royal Freshwater Bay Yacht Club
Course No. 218
Version 2026 - (not to scale)

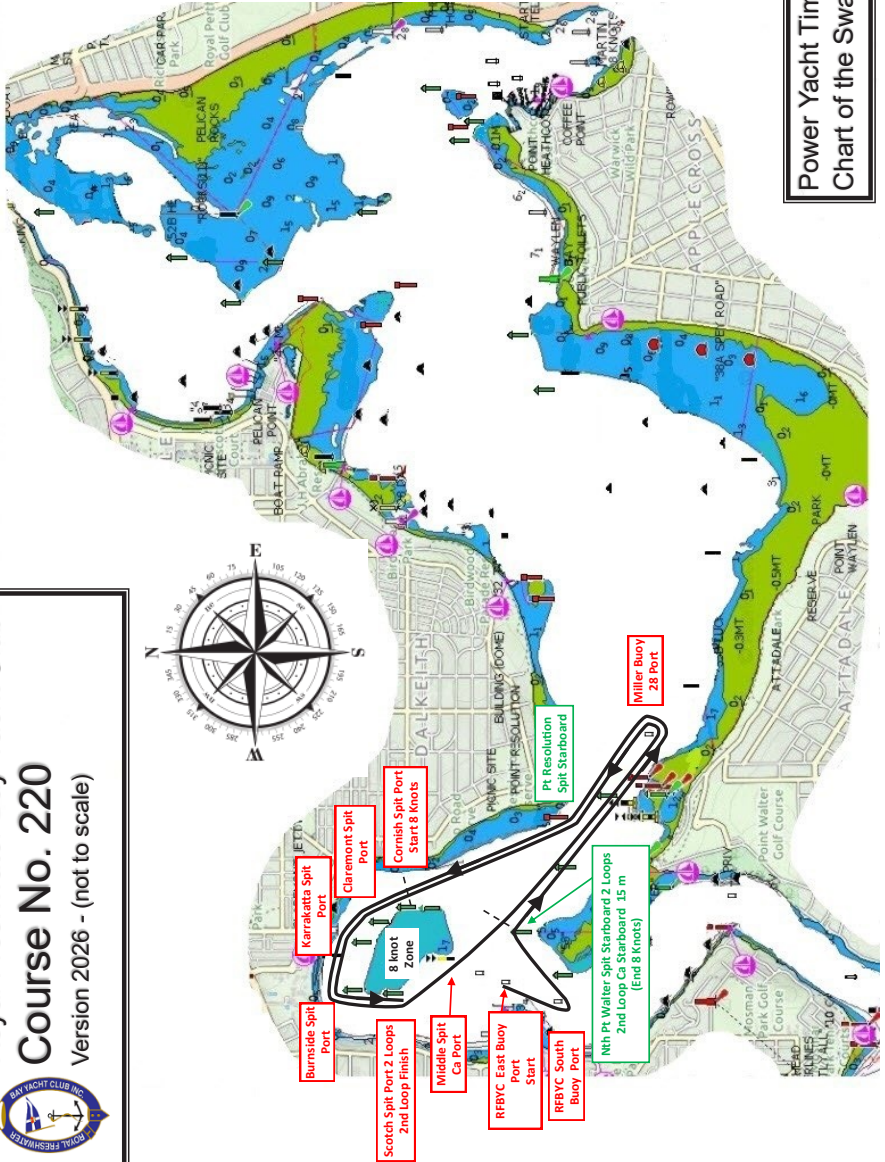


Power Yacht Time Trialling
Chart of the Swan River

COURSE 220

Power Yacht Time Trialling
Chart of the Swan River

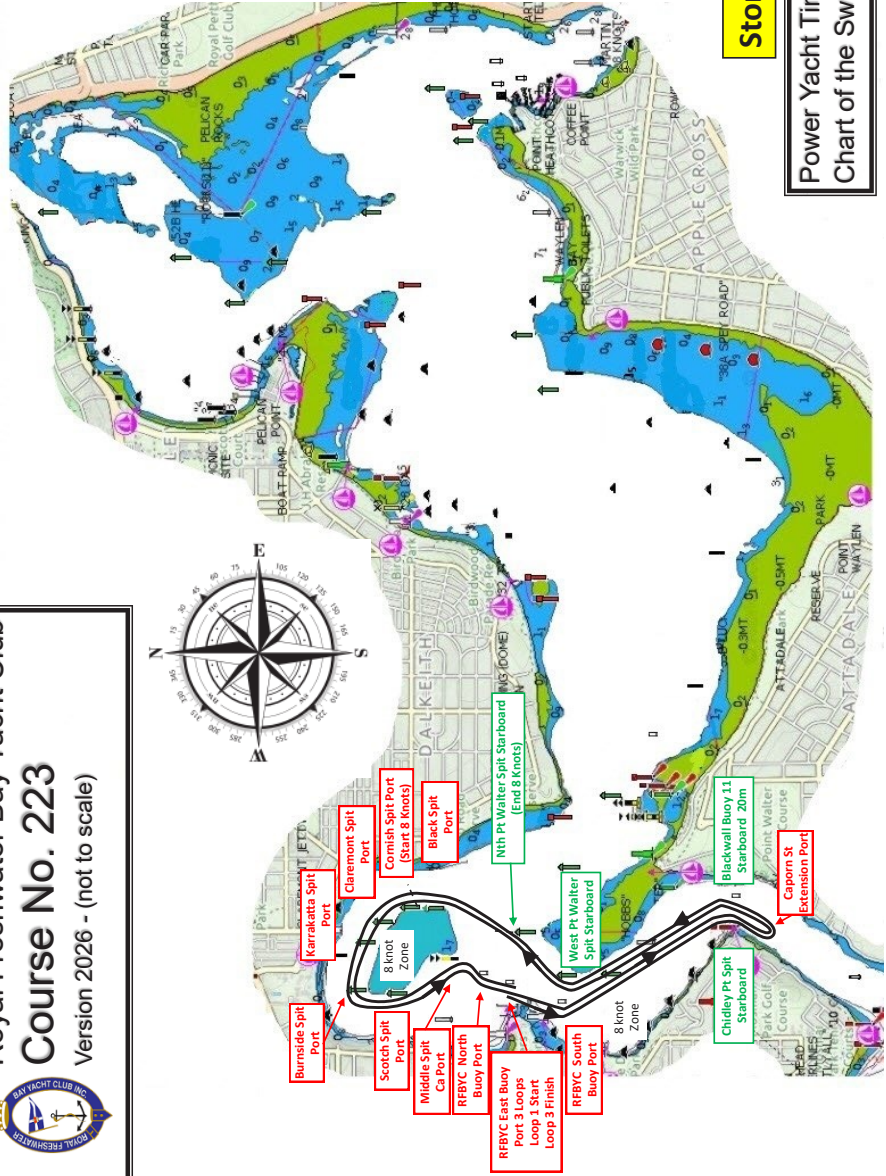
Royal Freshwater Bay Yacht Club
Course No. 220
Version 2026 - (not to scale)



COURSE 223

Storm Course
Power Yacht Time Trialling
Chart of the Swan River

Royal Freshwater Bay Yacht Club
Course No. 223
 Version 2026 - (not to scale)



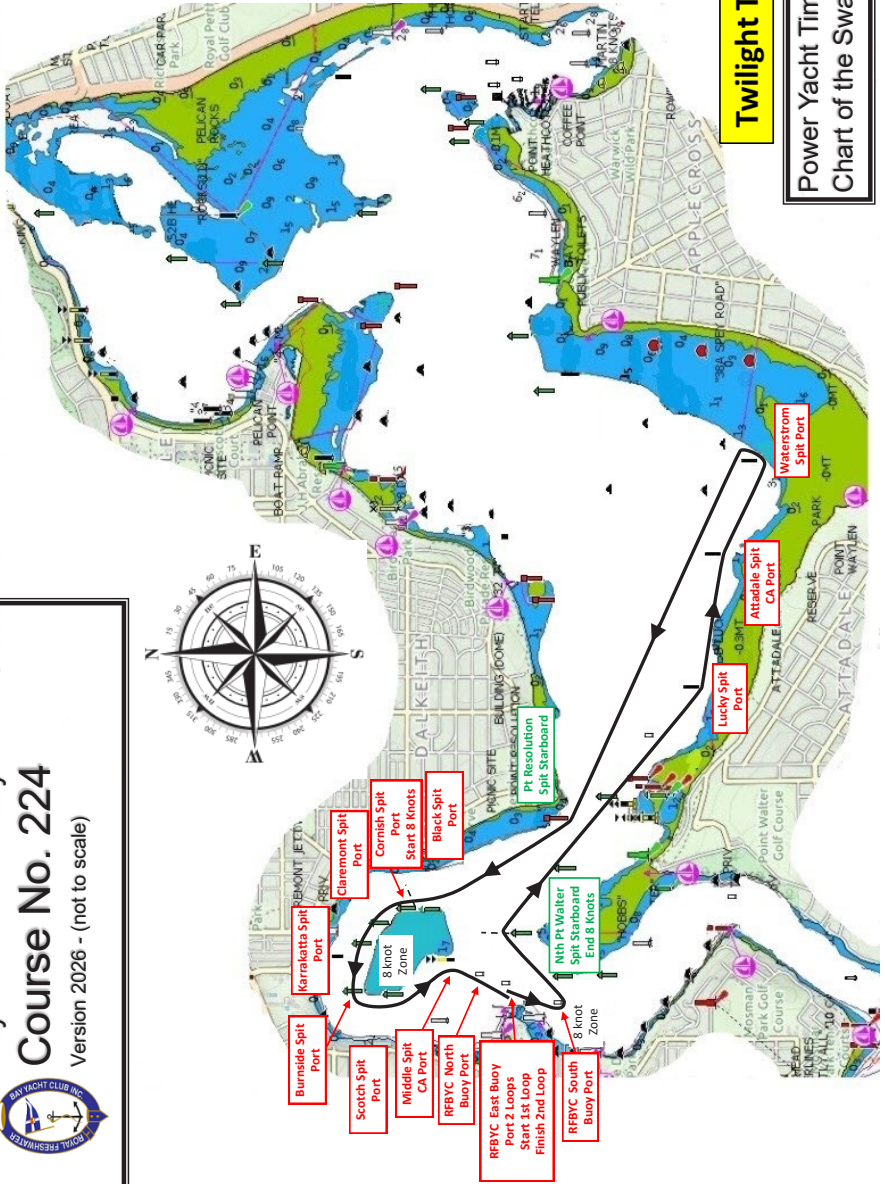
- Bunside Spit Port
- Karakatta Spit Port
- Claremont Spit Port
- Comish Spit Port (Start 8 Knots)
- Black Spit Port
- 8 knot Zone
- Scotch Spit Port
- Middle Spit Ca Port
- RFBYC North Buoy Port
- RFBYC East Buoy Port 3 Loops Loop 1 Start Loop 3 Finish
- RFBYC South Buoy Port
- 8 knot Zone
- West Pt. Walter Spit Starboard
- 8 knot Zone
- North Pt. Walter Spit Starboard (End 8 Knots)
- Chidley Pt Spit Starboard
- Blackwall Buoy 11 Starboard 20m
- Caporn St Extension Port

COURSE 224

Royal Freshwater Bay Yacht Club

Course No. 224

Version 2026 - (not to scale)



Twilight Time Trial

**Power Yacht Time Trialling
Chart of the Swan River**

LOG SHEET - STATE CHAMPIONSHIP (Individual)

DATE	POINTS LOST	HANDICAP	ADJ POINTS	PLACE

RFBYC TEAMS RESULTS

EVENT	POINTS EVENT	POSITION EVENT	POINTS CUMULATIVE	POSITION OVERALL
1				
2				
3				
4				
5				
6				
7				
8				

CONTACT US

Royal Freshwater Bay Yacht Club
Keane's Point
Peppermint Grove
Western Australia

Telephone 08 9286 8200
Website rfbyc.asn.au
Email rfbyc@rfbyc.asn.au
Postal PO Box 373
Cottesloe WA 6911

